

## \$215,000 - 201 10303 105 Street, Edmonton

MLS® #E4446051

**\$215,000**

2 Bedroom, 1.00 Bathroom, 852 sqft

Condo / Townhouse on 0.00 Acres

Downtown (Edmonton), Edmonton, AB

**\*\*\*LEGACY GEM\*\*\* WEST FACING END UNIT WITH KITCHEN WINDOW\*\*SOLID CONCRETE BUILDING\*\* IN SUITE LAUNDRY\*\*GREAT CONDITION\*\*** You will notice how well kept and upgraded this unit is from the moment you step inside. As this is an end unit you will have extra light in the spacious kitchen as well as the ability to have extra air flow. The kitchen also has lots of storage and counter space. The dining area can house a LARGE dining room table and has spaces for extra furniture if desired. The living room is bright, open and well laid out. The primary bedroom has a walk-through closet with direct access to the full washroom. The second bedroom is spacious and has a great view. There is in-suite laundry (YEAR OLD WASHER & DRYER), a storage room and also a covered and secure titled parking stall. The building has a fitness room as well as ample and secure bicycle storage. The Legacy is well managed with a healthy reserve fund and an amazing location.

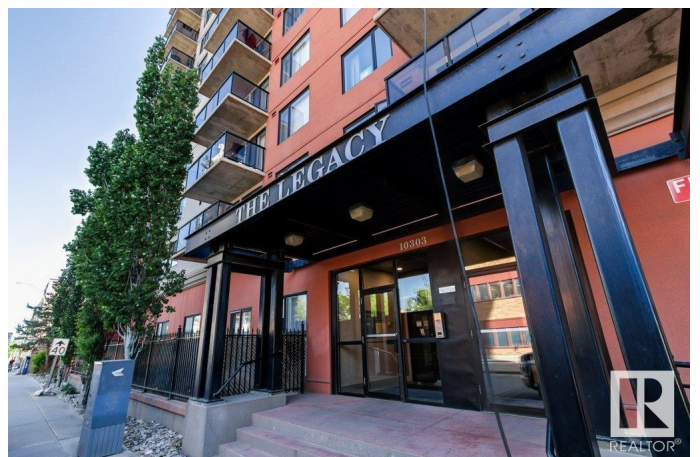
Built in 2002

### Essential Information

MLS® # E4446051

Price \$215,000

Bedrooms 2



Bathrooms	1.00
Full Baths	1
Square Footage	852
Acres	0.00
Year Built	2002
Type	Condo / Townhouse
Sub-Type	Apartment High Rise
Style	Single Level Apartment
Status	Active

### **Community Information**

Address	201 10303 105 Street
Area	Edmonton
Subdivision	Downtown (Edmonton)
City	Edmonton
County	ALBERTA
Province	AB
Postal Code	T5J 5G3

### **Amenities**

Amenities	Deck, No Animal Home, No Smoking Home, Secured Parking, Security Door
Parking	Parkade, Stall

### **Interior**

Appliances	Dishwasher-Built-In, Dryer, Microwave Hood Fan, Refrigerator, Stove-Electric, Washer, Window Coverings
Heating	Hot Water, Natural Gas
# of Stories	20
Stories	1
Has Basement	Yes
Basement	None, No Basement

### **Exterior**

Exterior	Concrete, Stucco
Exterior Features	Public Transportation, Schools, Shopping Nearby, Ski Hill Nearby, View City, View Downtown
Roof	Tar & Gravel
Construction	Concrete, Stucco

Foundation                      Concrete Perimeter

**Additional Information**

Date Listed                      July 4th, 2025  
Days on Market                17  
Zoning                              Zone 12  
Condo Fee                        \$542

DATA IS DEEMED RELIABLE BUT IS NOT GUARANTEED ACCURATE BY THE REALTORS® ASSOCIATION OF EDMONTON. COPYRIGHT 2025 BY THE REALTORS® ASSOCIATION OF EDMONTON. ALL RIGHTS RESERVED.Trademarks are owned or controlled by the Canadian Real Estate Association (CREA) and identify real estate professionals who are members of CREA (REALTOR®, REALTORS®) and/or the quality of services they provide (MLS®, Multiple Listing Service®)  
Listing information last updated on July 21st, 2025 at 9:02pm MDT