

## \$850,000 - 6736 11 Avenue, Edmonton

MLS® #E4444679

**\$850,000**

6 Bedroom, 5.50 Bathroom, 2,819 sqft

Single Family on 0.00 Acres

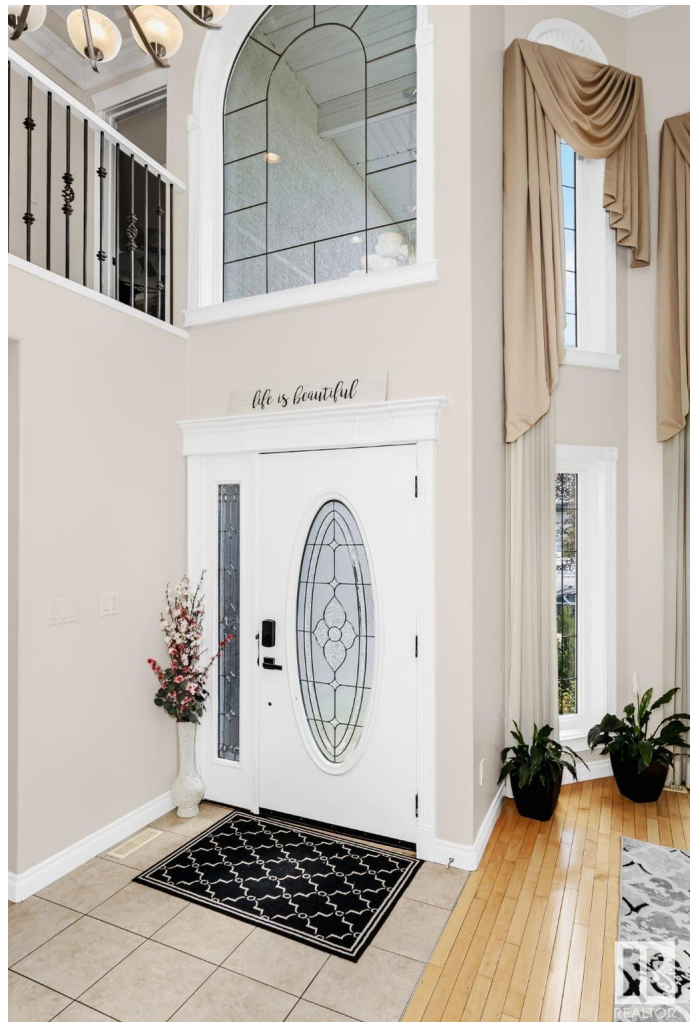
Summerside, Edmonton, AB

Gorgeous very well maintained 6 Bedroom with potentially 8 Bedrooms by utilizing other basement rooms, 6 Bath 2-storey located in the Edmonton SW Community of Summerside. Main features include a living room, formal dining area, island kitchen with loads of cupboard space, family room, office that can be used as a bedroom leading to a 4-piece bath. Upper level has 4 spacious bedrooms, with the primary having a 5-piece en-suite and a walk-in closet, and 2 of the bedrooms share a Jack & Jill 4-piece bath. As well, there is a 5-piece family bath. The basement is fully developed with a separate entrance to an in-law suite with a kitchen, dining area, living room, 2 additional bedrooms, a 4-piece and a 2-piece bath, a family room and a laundry room. Comes with a double attached garage, gorgeous landscaped back yard and a deck. What a great place to call home and is a real pleasure to show.

Built in 2004

### Essential Information

MLS® #	E4444679
Price	\$850,000
Bedrooms	6
Bathrooms	5.50
Full Baths	5



Half Baths	1
Square Footage	2,819
Acres	0.00
Year Built	2004
Type	Single Family
Sub-Type	Detached Single Family
Style	2 Storey
Status	Active

### Community Information

Address	6736 11 Avenue
Area	Edmonton
Subdivision	Summerside
City	Edmonton
County	ALBERTA
Province	AB
Postal Code	T6X 1L1

### Amenities

Amenities	Air Conditioner, Deck
Parking Spaces	5
Parking	Double Garage Attached

### Interior

Interior Features	ensuite bathroom
Appliances	Air Conditioning-Central, Dishwasher-Built-In, Dryer, Fan-Ceiling, Garage Opener, Hood Fan, Storage Shed, Vacuum System Attachments, See Remarks, Refrigerators-Two, Stoves-Two, Washers-Two
Heating	Forced Air-2, Natural Gas
Fireplace	Yes
Fireplaces	Glass Door, Mantel
Stories	3
Has Basement	Yes
Basement	Full, Finished

### Exterior

Exterior	Wood, Stucco
Exterior Features	Flat Site, Golf Nearby, Landscaped, Level Land, Schools, Shopping

	Nearby
Roof	Asphalt Shingles
Construction	Wood, Stucco
Foundation	Concrete Perimeter

### Additional Information

Date Listed	June 27th, 2025
Days on Market	17
Zoning	Zone 53



DATA IS DEEMED RELIABLE BUT IS NOT GUARANTEED ACCURATE BY THE REALTORS® ASSOCIATION OF EDMONTON. COPYRIGHT 2025 BY THE REALTORS® ASSOCIATION OF EDMONTON. ALL RIGHTS RESERVED. Trademarks are owned or controlled by the Canadian Real Estate Association (CREA) and identify real estate professionals who are members of CREA (REALTOR®, REALTORS®) and/or the quality of services they provide (MLS®, Multiple Listing Service®)

Listing information last updated on July 14th, 2025 at 5:47am MDT