

\$1,950,000 - 3001 11969 Jasper Avenue, Edmonton

MLS® #E4443854

\$1,950,000

3 Bedroom, 3.50 Bathroom, 3,734 sqft

Condo / Townhouse on 0.00 Acres

Wähkwãntãwin, Edmonton, AB

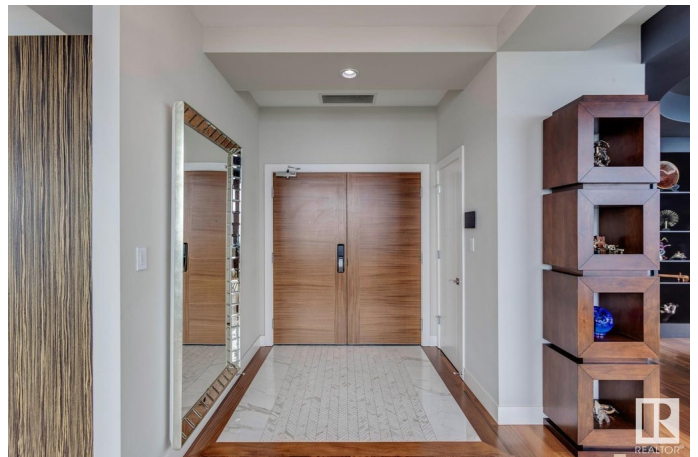
Here's your chance to HAVE ONE ENTIRE FLOOR TO YOURSELF and enjoy the ultimate in privacy and 360 DEGREES OF UNOBSTRUCTED VIEWS OF THE CITY. This breathtaking condo in the Pearl Tower spans one entire floor with \$200,000 in additional upgrades from the developer's original specifications. The property includes 3 bedrooms + den with 2 of the rooms being full master bedrooms that come with spectacular ensuites & walk-in closets. The unit also includes 3 living rooms, dining area, 3 fireplaces and an absolutely stunning kitchen that is fully equipped with wolf and sub zero appliances and complimented with quartz countertops. The entire floor is dressed with upgraded hardwood flooring, comes with a full wetbar, wine room, and a Savant automated system that control: TV's, sound, lighting, thermostat and motorized blinds. Not to forget 4 underground parking stalls, 6 balconies, your own private lobby on your floor and THE MOST INCREDIBLE 360 degree views of the City.

Built in 2015

Essential Information

MLS® # E4443854

Price \$1,950,000



Bedrooms	3
Bathrooms	3.50
Full Baths	3
Half Baths	1
Square Footage	3,734
Acres	0.00
Year Built	2015
Type	Condo / Townhouse
Sub-Type	Apartment High Rise
Style	Penthouse
Status	Active

Community Information

Address	3001 11969 Jasper Avenue
Area	Edmonton
Subdivision	Wøhkwßntãwin
City	Edmonton
County	ALBERTA
Province	AB
Postal Code	T5K 0P1

Amenities

Amenities	Car Wash, Ceiling 10 ft., Closet Organizers, Exercise Room, Intercom, Party Room, Smart/Program. Thermostat, Secured Parking, Social Rooms, See Remarks
Parking Spaces	4
Parking	Underground

Interior

Interior Features	ensuite bathroom
Appliances	Dryer, Hood Fan, Oven-Built-In, Oven-Microwave, Stove-Gas, Washer, Window Coverings, Wine/Beverage Cooler, See Remarks, Refrigerators-Two
Heating	Heat Pump, Natural Gas
Fireplace	Yes
Fireplaces	Direct Vent
# of Stories	36
Stories	1
Has Basement	Yes

Basement	None, No Basement
----------	-------------------

Exterior

Exterior	Concrete, Metal
Exterior Features	Back Lane, Backs Onto Park/Trees, Golf Nearby, Public Transportation, River Valley View, River View, Schools, Shopping Nearby, View City, View Downtown
Roof	EPDM Membrane
Construction	Concrete, Metal
Foundation	Concrete Perimeter

School Information

Elementary	Oliver
Middle	Westminster
High	Victoria

Additional Information

Date Listed	June 23rd, 2025
Days on Market	25
Zoning	Zone 12
Condo Fee	\$3,918

DATA IS DEEMED RELIABLE BUT IS NOT GUARANTEED ACCURATE BY THE REALTORS® ASSOCIATION OF EDMONTON. COPYRIGHT 2025 BY THE REALTORS® ASSOCIATION OF EDMONTON. ALL RIGHTS RESERVED. Trademarks are owned or controlled by the Canadian Real Estate Association (CREA) and identify real estate professionals who are members of CREA (REALTOR®, REALTORS®) and/or the quality of services they provide (MLS®, Multiple Listing Service®)

Listing information last updated on July 18th, 2025 at 8:32am MDT