

# \$313,000 - 140 150 Edwards Drive, Edmonton

MLS® #E4443092

**\$313,000**

2 Bedroom, 2.50 Bathroom, 1,096 sqft  
Condo / Townhouse on 0.00 Acres

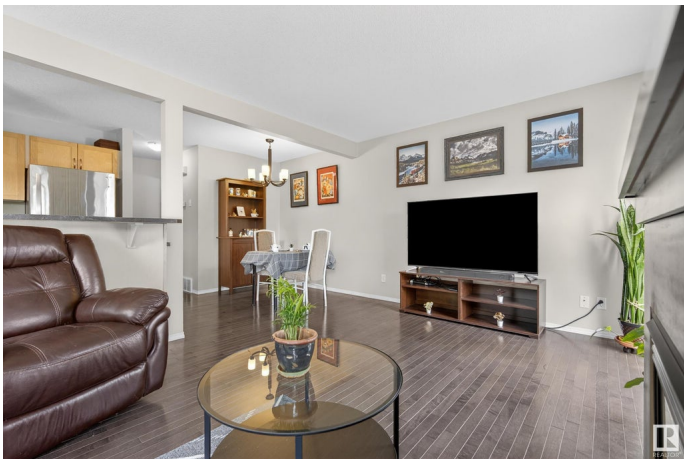
Ellerslie, Edmonton, AB

Stylish end-unit townhome offering added natural light and extra privacy. This well-maintained home features rich hardwood floors, custom aluminum blinds, and a spacious layout throughout. The primary bedroom includes a large ensuite for your comfort. The kitchen boasts a raised breakfast bar, perfect for entertaining. Enjoy a more private backyard setting and the convenience of a rare extra parking pad—room for three vehicles total. With lower condo fees this property offers exceptional value in a quiet, desirable community. Move-in ready and ideal for first-time buyers, downsizers, or investors seeking a low-maintenance lifestyle with smart features throughout.

Built in 2005

## Essential Information

MLS® #	E4443092
Price	\$313,000
Bedrooms	2
Bathrooms	2.50
Full Baths	2
Half Baths	1
Square Footage	1,096
Acres	0.00
Year Built	2005



Type	Condo / Townhouse
Sub-Type	Townhouse
Style	2 Storey
Status	Active

### Community Information

Address	140 150 Edwards Drive
Area	Edmonton
Subdivision	Ellerslie
City	Edmonton
County	ALBERTA
Province	AB
Postal Code	T6X 1M4

### Amenities

Amenities	Detectors Smoke, Parking-Extra
Parking	Single Garage Attached

### Interior

Interior Features	ensuite bathroom
Appliances	Dryer, Garage Control, Garage Opener, Microwave Hood Fan, Refrigerator, Stove-Electric, Washer, Window Coverings
Heating	Forced Air-1, Natural Gas
Fireplace	Yes
Fireplaces	Glass Door
Stories	2
Has Basement	Yes
Basement	Full, Unfinished

### Exterior

Exterior	Wood, Vinyl
Exterior Features	Playground Nearby, Public Transportation, Shopping Nearby
Roof	Asphalt Shingles
Construction	Wood, Vinyl
Foundation	Concrete Perimeter

### Additional Information

Date Listed	June 19th, 2025
Days on Market	4

Zoning	Zone 53
Condo Fee	\$245

DATA IS DEEMED RELIABLE BUT IS NOT GUARANTEED ACCURATE BY THE REALTORS® ASSOCIATION OF EDMONTON. COPYRIGHT 2025 BY THE REALTORS® ASSOCIATION OF EDMONTON. ALL RIGHTS RESERVED. Trademarks are owned or controlled by the Canadian Real Estate Association (CREA) and identify real estate professionals who are members of CREA (REALTOR®, REALTORS®) and/or the quality of services they provide (MLS®, Multiple Listing Service®)

Listing information last updated on June 23rd, 2025 at 1:32am MDT