

## \$776,000 - 143 24 St Sw, Edmonton

MLS® #E4440936

**\$776,000**

3 Bedroom, 4.00 Bathroom, 2,502 sqft

Single Family on 0.00 Acres

Alces, Edmonton, AB

Beautiful Pre-construction Opportunity in Alces, Edmonton! This could be your next dream home. This nearly 2500 sq. ft. pre-construction home in the growing community of Alces blends luxury, comfort, and functionality in the perfect way. Main Floor Highlights a Spacious office – ideal for working from home, Full bathroom on the main level, Stunning open-to-below design and main kitchen plus a spice kitchen for all your cooking creativity. Upstairs Features Two primary bedrooms with their own ensuite bathrooms, Third bedroom plus another full bath and an Additional office space or flex area for remote work or study. This community is family-friendly and designed for convenience – with all major amenities just minutes away, including schools, shopping, dining, and transit. Enjoy the outdoors with a beautiful park located right in the neighborhood – perfect for evening strolls or weekend picnics.

Built in 2025

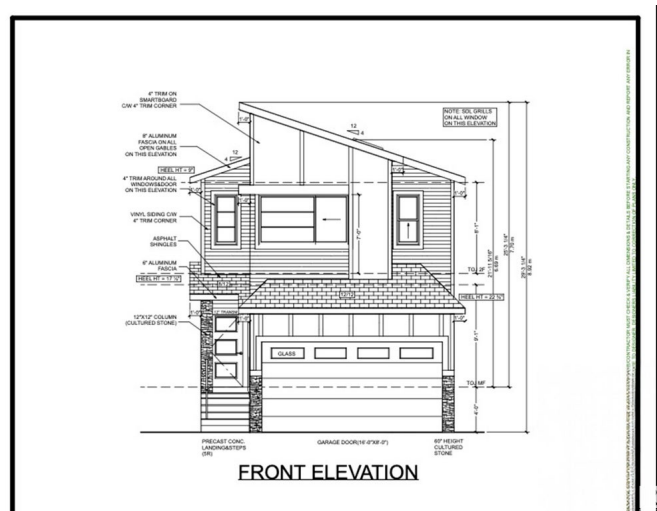
### Essential Information

MLS® # E4440936

Price \$776,000

Bedrooms 3

Bathrooms 4.00



Full Baths	4
Square Footage	2,502
Acres	0.00
Year Built	2025
Type	Single Family
Sub-Type	Detached Single Family
Style	2 Storey
Status	Active

### Community Information

Address	143 24 St Sw
Area	Edmonton
Subdivision	Alces
City	Edmonton
County	ALBERTA
Province	AB
Postal Code	T6X 3K4

### Amenities

Amenities	Carbon Monoxide Detectors, Ceiling 9 ft., Detectors Smoke
Parking	Double Garage Attached

### Interior

Interior Features	ensuite bathroom
Appliances	Appliances Negotiable
Heating	Forced Air-1, Natural Gas
Stories	2
Has Basement	Yes
Basement	Full, Unfinished

### Exterior

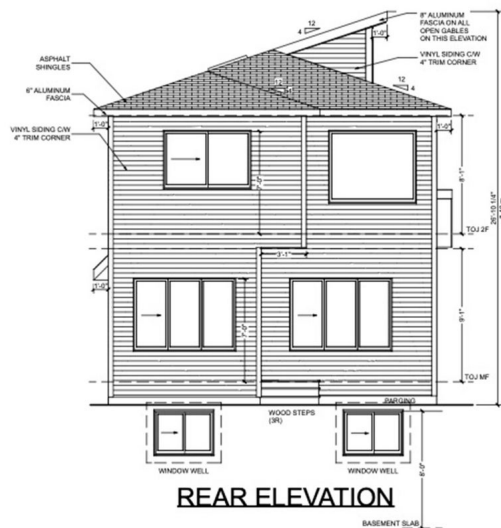
Exterior	Wood, Vinyl
Exterior Features	Airport Nearby, Schools, Shopping Nearby
Roof	Asphalt Shingles
Construction	Wood, Vinyl
Foundation	Concrete Perimeter

### Additional Information

Date Listed	June 6th, 2025
-------------	----------------

Days on Market42

ZoningZone 53



DATA IS DEEMED RELIABLE BUT IS NOT GUARANTEED ACCURATE BY THE REALTORS® ASSOCIATION OF EDMONTON. COPYRIGHT 2025 BY THE REALTORS® ASSOCIATION OF EDMONTON. ALL RIGHTS RESERVED.Trademarks are owned or controlled by the Canadian Real Estate Association (CREA) and identify real estate professionals who are members of CREA (REALTOR®, REALTORS®) and/or the quality of services they provide (MLS®, Multiple Listing Service®)

Listing information last updated on July 18th, 2025 at 10:47am MDT