

\$129,900 - 132 4404 122 Street, Edmonton

MLS® #E4440900

\$129,900

2 Bedroom, 1.50 Bathroom, 1,119 sqft
Condo / Townhouse on 0.00 Acres

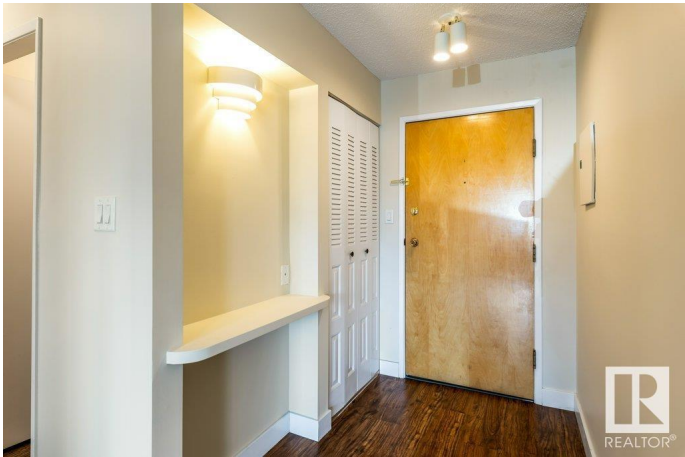
Aspen Gardens, Edmonton, AB

Aspen Garden Estates â€œ Exceptional Value in a Prime Location! Just move in and enjoy this spacious 1,099 sq ft single-level apartment featuring 2 generous bedrooms, 1.5 baths, in-suite laundry, an open kitchen with adjacent dining area, and a very large living room. Step outside to your private balcony and enjoy the convenience of one energized covered parking stall. This well-maintained complex offers terrific amenities including a fitness room, party room, and a large outdoor deck. Condo fees include electricity, heat, and water. Ideally located in the highly sought-after Aspen Gardens community in Southwest Edmonton, you're steps away from the Whitemud Ravine, Snow Valley Ski Hill, and top-rated schools including the University of Alberta. With easy access to shopping, restaurants, public transportation, the LRT, and major roadways, this is truly a great place to call home!

Built in 1976

Essential Information

MLS® #	E4440900
Price	\$129,900
Bedrooms	2
Bathrooms	1.50
Full Baths	1
Half Baths	1



Square Footage	1,119
Acres	0.00
Year Built	1976
Type	Condo / Townhouse
Sub-Type	Lowrise Apartment
Style	Single Level Apartment
Status	Active

Community Information

Address	132 4404 122 Street
Area	Edmonton
Subdivision	Aspen Gardens
City	Edmonton
County	ALBERTA
Province	AB
Postal Code	T6J 4A9

Amenities

Amenities	Parking-Visitor, Patio, See Remarks
Parking	Stall

Interior

Interior Features	ensuite bathroom
Appliances	Dishwasher-Built-In, Refrigerator, Stacked Washer/Dryer, Stove-Electric
Heating	Hot Water, Natural Gas
# of Stories	4
Stories	1
Has Basement	Yes
Basement	None, No Basement

Exterior

Exterior	Wood, Brick, Vinyl
Exterior Features	Playground Nearby, Public Transportation, Schools, Shopping Nearby, See Remarks
Roof	Asphalt Shingles
Construction	Wood, Brick, Vinyl
Foundation	Concrete Perimeter

Additional Information

Date Listed	June 6th, 2025
Days on Market	30
Zoning	Zone 16
Condo Fee	\$790

DATA IS DEEMED RELIABLE BUT IS NOT GUARANTEED ACCURATE BY THE REALTORS® ASSOCIATION OF EDMONTON. COPYRIGHT 2025 BY THE REALTORS® ASSOCIATION OF EDMONTON. ALL RIGHTS RESERVED. Trademarks are owned or controlled by the Canadian Real Estate Association (CREA) and identify real estate professionals who are members of CREA (REALTOR®, REALTORS®) and/or the quality of services they provide (MLS®, Multiple Listing Service®)

Listing information last updated on July 6th, 2025 at 5:17pm MDT