

## \$275,000 - 9541 180a Street, Edmonton

MLS® #E4440355

**\$275,000**

3 Bedroom, 1.50 Bathroom, 1,081 sqft  
Condo / Townhouse on 0.00 Acres

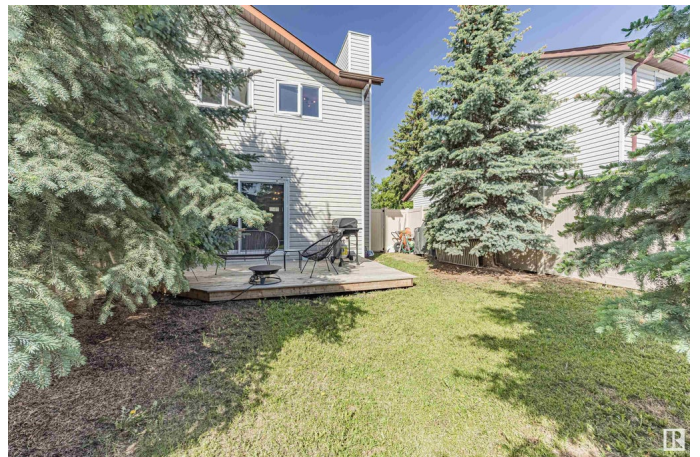
La Perle, Edmonton, AB

Pack your bags - your home is ready! This refreshed & well-maintained 3bed, 1.5bath, 1081 sqft + 517 sqft half-duplex condo in La Perle delivers unbeatable value. Step inside & feel right at home w/ laminate flooring, new lighting fixtures, warm & inviting refreshed kitchen featuring charming GEM cabinets & spacious dining area. The sun-drenched living room is the heart of the home â€” anchored by a cozy stone-faced fireplace & patio doors that lead to your PRIVATE, fully fenced backyard oasis surrounded by mature trees - tranquility & privacy! Convenient 2pc powder room is tucked away. Upstairs, youâ€™™ll find 3 generously sized bedrooms, including primary w/ dual closets + full 4-piece bath. The fully finished basement offers even more versatility w/ comfortable family room, plenty of storage & stackable laundry. This quiet, pet-friendly complex comes w/ low condo fees & major exterior upgrades already done â€” newer roof, windows, siding & vinyl fencing. Plus: parking for two on the driveway!

Built in 1979

### Essential Information

MLS® #	E4440355
Price	\$275,000
Bedrooms	3



Bathrooms	1.50
Full Baths	1
Half Baths	1
Square Footage	1,081
Acres	0.00
Year Built	1979
Type	Condo / Townhouse
Sub-Type	Half Duplex
Style	2 Storey
Status	Active

### Community Information

Address	9541 180a Street
Area	Edmonton
Subdivision	La Perle
City	Edmonton
County	ALBERTA
Province	AB
Postal Code	T5T 2Z4

### Amenities

Amenities	On Street Parking, Deck, Parking-Visitor
Parking Spaces	2
Parking	2 Outdoor Stalls, Front Drive Access, No Garage, Parking Pad Cement/Paved

### Interior

Appliances	Dishwasher-Built-In, Dryer, Microwave Hood Fan, Refrigerator, Stove-Electric, Washer, Window Coverings
Heating	Forced Air-1, Natural Gas
Fireplace	Yes
Fireplaces	Stone Facing
Stories	3
Has Basement	Yes
Basement	Full, Finished

### Exterior

Exterior	Wood, Vinyl
Exterior Features	Fenced, Landscaped, Level Land, Park/Reserve, Picnic Area,

Playground Nearby, Public Swimming Pool, Public Transportation,  
Schools, Shopping Nearby

Roof	Asphalt Shingles
Construction	Wood, Vinyl
Foundation	Concrete Perimeter

### **Additional Information**

Date Listed	June 4th, 2025
Days on Market	4
Zoning	Zone 20
Condo Fee	\$321

DATA IS DEEMED RELIABLE BUT IS NOT GUARANTEED ACCURATE BY THE REALTORS® ASSOCIATION OF EDMONTON. COPYRIGHT 2025 BY THE REALTORS® ASSOCIATION OF EDMONTON. ALL RIGHTS RESERVED. Trademarks are owned or controlled by the Canadian Real Estate Association (CREA) and identify real estate professionals who are members of CREA (REALTOR®, REALTORS®) and/or the quality of services they provide (MLS®, Multiple Listing Service®)

Listing information last updated on June 8th, 2025 at 2:02pm MDT