

\$129,900 - 311 1620 48 Street, Edmonton

MLS® #E4440303

\$129,900

1 Bedroom, 1.00 Bathroom, 674 sqft

Condo / Townhouse on 0.00 Acres

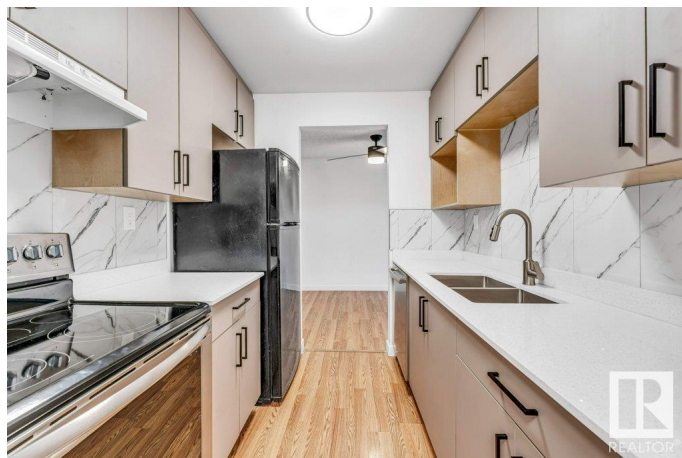
Pollard Meadows, Edmonton, AB

!!! Investor and First time Home Buyers ALERT !!! With low condo fee and only \$57/month Property Tax, this Fully Renovated & Stunning modern 1-bed, 1-bath condo is a true gem, featuring quartz countertops, sleek stainless steel appliances, and a beautifully redone bathroom with a new tub and surround. Step onto the large east-facing patio and soak in the sunlight and tranquility of a quiet, tree-lined street. Inside, you'll find a spacious storage room, stylish vinyl windows, and elegant ceiling-height kitchen cabinets, adding both charm and functionality. The low Condo fee complex offers an elevator, same-floor laundry, secure entry, and an energized parking stall. Walking trails, a park, Pollard Meadows Elementary School, walking distance to Gurdwara (Sikh worship place) and just minutes from Millwoods Transit Centre, this condo delivers a perfect blend of comfort, style, and accessibility.

Built in 1981

Essential Information

MLS® #	E4440303
Price	\$129,900
Bedrooms	1
Bathrooms	1.00
Full Baths	1



Square Footage	674
Acres	0.00
Year Built	1981
Type	Condo / Townhouse
Sub-Type	Lowrise Apartment
Style	Single Level Apartment
Status	Active

Community Information

Address	311 1620 48 Street
Area	Edmonton
Subdivision	Pollard Meadows
City	Edmonton
County	ALBERTA
Province	AB
Postal Code	T6L 5B1

Amenities

Amenities	Intercom, No Animal Home, No Smoking Home, Parking-Plug-Ins, Security Door
Parking	Stall

Interior

Appliances	Dishwasher-Built-In, Hood Fan, Refrigerator, Stove-Electric, Window Coverings
Heating	Baseboard, Natural Gas
# of Stories	4
Stories	1
Has Basement	Yes
Basement	None, No Basement

Exterior

Exterior	Wood, Stucco, Vinyl
Exterior Features	Commercial, Playground Nearby, Public Transportation, Schools, Shopping Nearby
Roof	Flat
Construction	Wood, Stucco, Vinyl
Foundation	Concrete Perimeter

Additional Information

Date Listed	June 4th, 2025
Days on Market	20
Zoning	Zone 29
Condo Fee	\$362

DATA IS DEEMED RELIABLE BUT IS NOT GUARANTEED ACCURATE BY THE REALTORS® ASSOCIATION OF EDMONTON. COPYRIGHT 2025 BY THE REALTORS® ASSOCIATION OF EDMONTON. ALL RIGHTS RESERVED. Trademarks are owned or controlled by the Canadian Real Estate Association (CREA) and identify real estate professionals who are members of CREA (REALTOR®, REALTORS®) and/or the quality of services they provide (MLS®, Multiple Listing Service®)

Listing information last updated on June 24th, 2025 at 5:32pm MDT