

## **\$499,702 - 146 Galloway Drive, Sherwood Park**

MLS® #E4440166

**\$499,702**

3 Bedroom, 2.50 Bathroom, 1,250 sqft

Single Family on 0.00 Acres

Glen Allan, Sherwood Park, AB

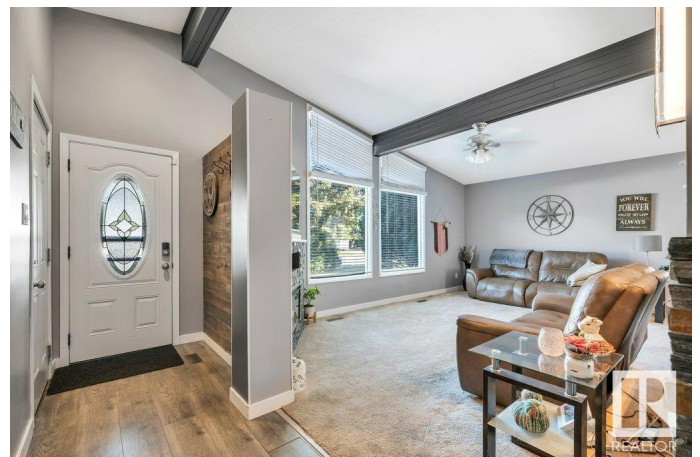
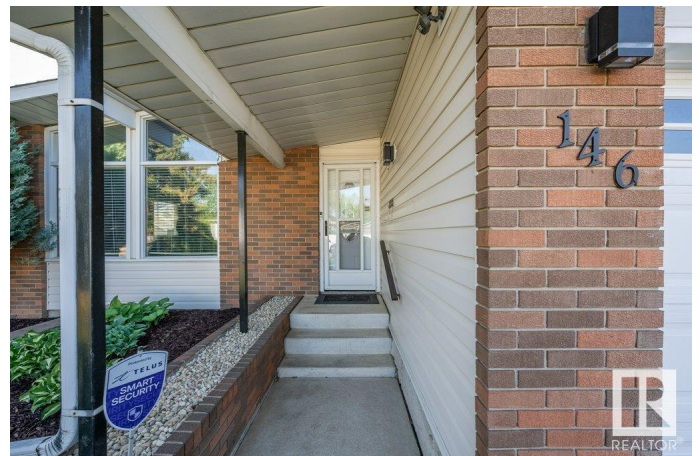
OVER 1200 SQ FT BUNGALOW IN THE HEART OF SHERWOOD PARK/GLEN ALLAN!...BACKS ONTO WALKING/BIKE TRAIL...RENOVATED MAIN FLOOR!...FULLY FINISHED BASEMENT!...This gorgeous home has so much to offer! Kitchen features classic white cabinetry, newer back splash, granite counter tops, stainless steel appliances & eating bar overlooking the living area with vaulted ceiling and electric stone fireplace. Newer laminate flooring too! Three spacious bedrooms on main, w/primary having a 3 pce ensuite! Fully finished basement is also a great entertaining space, and offers a huge rec room with gas fireplace & bar area, as well as 2 pce bath. Enjoy the private backyard with mature trees and a large deck, backing walking trails/bike path. Close to all amenities - parks, schools, Glen Allan Rec Centre, and Sherwood Park Mall. NEWER SHINGLES (approx 6 yrs ago). And don't forget the AC that comes with this home, just in time for summer! This property has everything you need and more! ~!WELCOME HOME!~

Built in 1973

### **Essential Information**

MLS® # E4440166

Price \$499,702



Bedrooms	3
Bathrooms	2.50
Full Baths	2
Half Baths	1
Square Footage	1,250
Acres	0.00
Year Built	1973
Type	Single Family
Sub-Type	Detached Single Family
Style	Bungalow
Status	Active

### Community Information

Address	146 Galloway Drive
Area	Sherwood Park
Subdivision	Glen Allan
City	Sherwood Park
County	ALBERTA
Province	AB
Postal Code	T8A 2N2

### Amenities

Amenities	Deck
Parking Spaces	4
Parking	Double Garage Attached, Insulated

### Interior

Interior Features	ensuite bathroom
Appliances	Air Conditioning-Central, Dishwasher-Built-In, Dryer, Garage Control, Garage Opener, Microwave Hood Fan, Refrigerator, Stove-Electric, Washer
Heating	Forced Air-1, Natural Gas
Fireplace	Yes
Fireplaces	Stone Facing
Stories	2
Has Basement	Yes
Basement	Full, Finished

### Exterior

Exterior	Wood, Brick, Vinyl
Exterior Features	Fenced, Flat Site, Landscaped, Park/Reserve, Playground Nearby, Private Setting, Public Transportation, Schools, Shopping Nearby, See Remarks
Roof	Asphalt Shingles
Construction	Wood, Brick, Vinyl
Foundation	Concrete Perimeter

**Additional Information**

Date Listed	June 3rd, 2025
Days on Market	4
Zoning	Zone 25

DATA IS DEEMED RELIABLE BUT IS NOT GUARANTEED ACCURATE BY THE REALTORS® ASSOCIATION OF EDMONTON. COPYRIGHT 2025 BY THE REALTORS® ASSOCIATION OF EDMONTON. ALL RIGHTS RESERVED.Trademarks are owned or controlled by the Canadian Real Estate Association (CREA) and identify real estate professionals who are members of CREA (REALTOR®, REALTORS®) and/or the quality of services they provide (MLS®, Multiple Listing Service®)

Listing information last updated on June 7th, 2025 at 7:32pm MDT