

## \$769,000 - 3307 Chickadee Drive, Edmonton

MLS® #E4439806

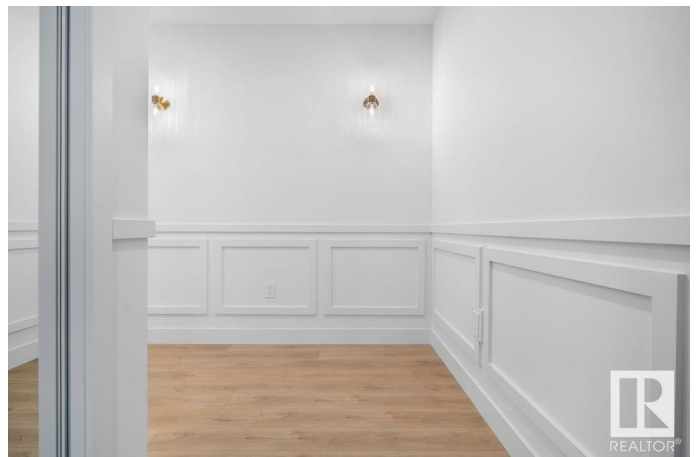
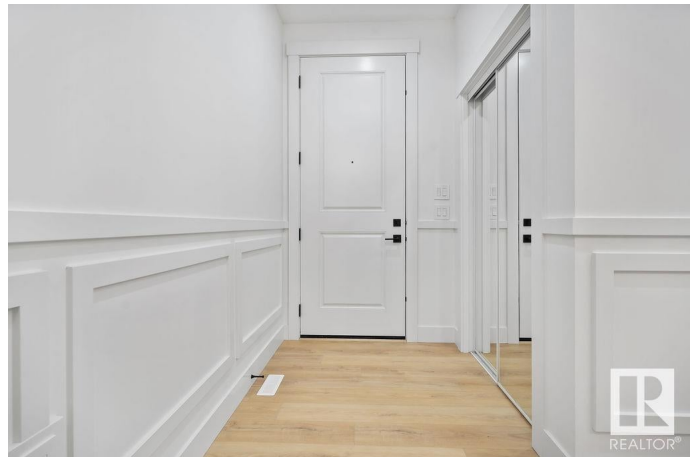
**\$769,000**

4 Bedroom, 3.00 Bathroom, 2,411 sqft

Single Family on 0.00 Acres

Starling, Edmonton, AB

**WALKOUT. POND VIEWS. PLATINUM FINISHES.** Welcome to this stunning 2400+ sqft. Custom-built walkout by renowned Singh Builders, located in Starling South. Perfectly positioned on a regular lot with pond views, this home blends modern elegance with functional family living. The main floor features a full bedroom and 3-piece bathroom, ideal for guests or multigenerational families. The open-concept layout offers a bright living room with soaring open-to-below ceilings, a sleek custom feature wall with fireplace, and a cozy dining nook that overlooks nature. The thoughtfully designed kitchen with a spice kitchen offers both style and function, with extended cabinetry and modern finishes. On top floor, The primary suite stands out with a beautifully lit feature wall, expansive glass windows, and a sun-filled 5-piece ensuite. A Bonus room, Walk in Laundry with a Sink and Two additional bedrooms offer generous space—one with private access to a 3-piece ensuite, and the other steps away from a shared bath.



Built in 2024

### Essential Information

MLS® # E4439806

Price \$769,000

Bedrooms	4
Bathrooms	3.00
Full Baths	3
Square Footage	2,411
Acres	0.00
Year Built	2024
Type	Single Family
Sub-Type	Detached Single Family
Style	2 Storey
Status	Active

### Community Information

Address	3307 Chickadee Drive
Area	Edmonton
Subdivision	Starling
City	Edmonton
County	ALBERTA
Province	AB
Postal Code	T5S 0V5

### Amenities

Amenities	Ceiling 9 ft., Deck, Walkout Basement
Parking	Double Garage Attached

### Interior

Interior Features	ensuite bathroom
Appliances	Garage Control, Garage Opener, Builder Appliance Credit
Heating	Forced Air-1, Natural Gas
Fireplace	Yes
Fireplaces	Insert
Stories	2
Has Basement	Yes
Basement	Full, Unfinished

### Exterior

Exterior	Wood, Vinyl
Exterior Features	Golf Nearby, See Remarks
Roof	Asphalt Shingles
Construction	Wood, Vinyl

Foundation                      Concrete Perimeter

**Additional Information**

Date Listed                      June 1st, 2025

Days on Market                6

Zoning                            Zone 59

DATA IS DEEMED RELIABLE BUT IS NOT GUARANTEED ACCURATE BY THE REALTORS® ASSOCIATION OF EDMONTON. COPYRIGHT 2025 BY THE REALTORS® ASSOCIATION OF EDMONTON. ALL RIGHTS RESERVED.Trademarks are owned or controlled by the Canadian Real Estate Association (CREA) and identify real estate professionals who are members of CREA (REALTOR®, REALTORS®) and/or the quality of services they provide (MLS®, Multiple Listing Service®)

Listing information last updated on June 7th, 2025 at 3:02am MDT