

## \$474,900 - 5507 92a Avenue, Edmonton

MLS® #E4439574

**\$474,900**

4 Bedroom, 2.00 Bathroom, 1,212 sqft

Single Family on 0.00 Acres

Ottewell, Edmonton, AB

Nestled in the heart of Ottewell, this beautifully updated bungalow blends warmth, functionality, and charm. Featuring triple-pane windows, luxury vinyl plank flooring, granite countertops, stainless steel appliances, and a cozy gas fireplace, this move-in-ready home is both stylish and well maintained. The spacious main level includes 3 bedrooms and a full bathroom. Downstairs, enjoy a fully finished basement offering a large family room or second living space, 1 bedroom, a versatile flex space ideal for a home office or gym, another full bathroom, and a separate utility/laundry room with plenty of storage. Step outside to a private, south-facing backyard with garden boxes, a patio oasis, and an oversized garage with a heated workshop, plus ample rear and side parking for multiple vehicles. Located just steps from schools, parks, Kings University, and major routes like Sherwood Park Freeway and Anthony Henday—this is a rare opportunity to enjoy modern living in a mature community.

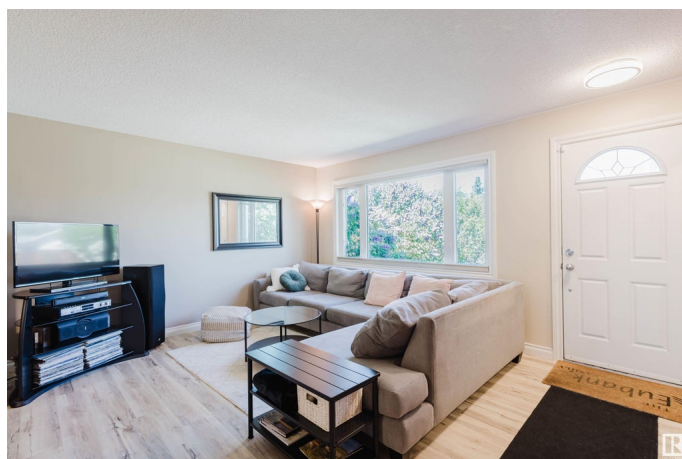
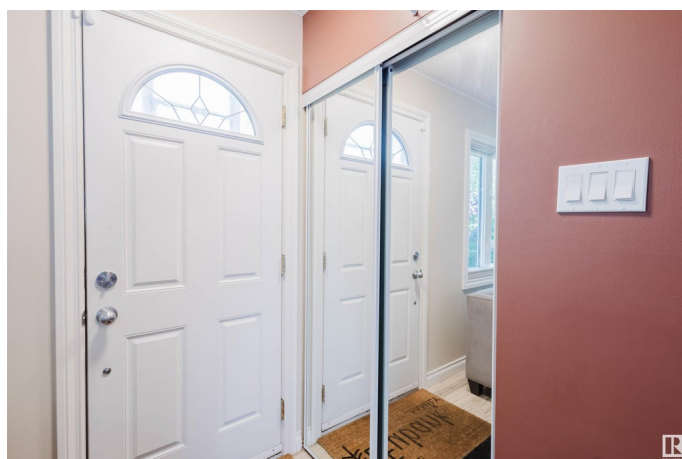
Built in 1964

### Essential Information

MLS® # E4439574

Price \$474,900

Bedrooms 4



Bathrooms	2.00
Full Baths	2
Square Footage	1,212
Acres	0.00
Year Built	1964
Type	Single Family
Sub-Type	Detached Single Family
Style	Bungalow
Status	Active

### Community Information

Address	5507 92a Avenue
Area	Edmonton
Subdivision	Ottewell
City	Edmonton
County	ALBERTA
Province	AB
Postal Code	T6B 0S9

### Amenities

Amenities	Patio, Workshop
Parking Spaces	4
Parking	Single Garage Detached

### Interior

Appliances	Dishwasher-Built-In, Dryer, Microwave Hood Fan, Refrigerator, Stove-Electric, Washer
Heating	Forced Air-1, Natural Gas
Fireplace	Yes
Fireplaces	Brick Facing
Stories	2
Has Basement	Yes
Basement	Full, Finished

### Exterior

Exterior	Wood, Stucco, Vinyl
Exterior Features	Back Lane, Fenced, Flat Site, Fruit Trees/Shrubs, Landscaped, Paved Lane, Playground Nearby, Public Transportation, Schools, Shopping Nearby, See Remarks

Roof	Asphalt Shingles
Construction	Wood, Stucco, Vinyl
Foundation	Concrete Perimeter

**Additional Information**

Date Listed	May 30th, 2025
Days on Market	3
Zoning	Zone 18

DATA IS DEEMED RELIABLE BUT IS NOT GUARANTEED ACCURATE BY THE REALTORS® ASSOCIATION OF EDMONTON. COPYRIGHT 2025 BY THE REALTORS® ASSOCIATION OF EDMONTON. ALL RIGHTS RESERVED.Trademarks are owned or controlled by the Canadian Real Estate Association (CREA) and identify real estate professionals who are members of CREA (REALTOR®, REALTORS®) and/or the quality of services they provide (MLS®, Multiple Listing Service®)

Listing information last updated on June 2nd, 2025 at 4:47pm MDT