

\$375,000 - 2 Aurea Bay, Spruce Grove

MLS® #E4437563

\$375,000

2 Bedroom, 2.50 Bathroom, 1,362 sqft

Single Family on 0.00 Acres

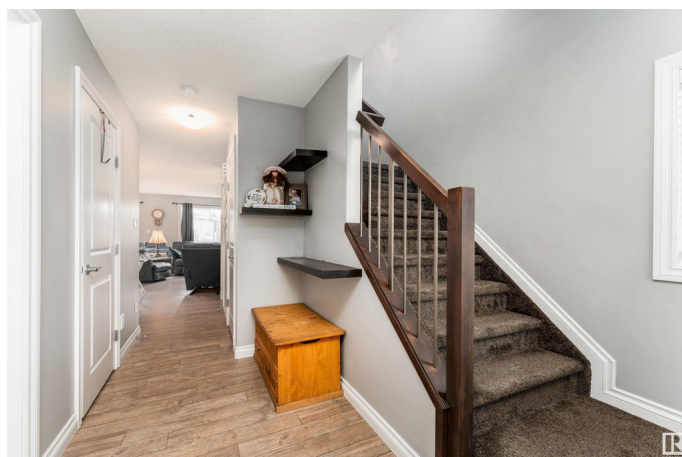
Aspen Glen, Spruce Grove, AB

Welcome to this beautifully maintained half duplex in the family-friendly community of Aspen Glen, Spruce Grove. This two-storey home features a bright and open main floor with a spacious living room, dining area, modern kitchen with granite countertops and pantry, plus a convenient 2-piece bathroom. Upstairs, you'll find a versatile bonus room, a primary bedroom with a 4-piece ensuite, and a second bedroom with its own walk-in closet. Another 4-piece bathroom completes the upper level. Enjoy the large deck, oversized single garage, and easy access to walking trails, a golf course, and major routes. This home offers both comfort and convenience in a prime location.

Built in 2015

Essential Information

MLS® #	E4437563
Price	\$375,000
Bedrooms	2
Bathrooms	2.50
Full Baths	2
Half Baths	1
Square Footage	1,362
Acres	0.00
Year Built	2015



Type	Single Family
Sub-Type	Half Duplex
Style	2 Storey
Status	Active

Community Information

Address	2 Aurea Bay
Area	Spruce Grove
Subdivision	Aspen Glen
City	Spruce Grove
County	ALBERTA
Province	AB
Postal Code	T7X 0V4

Amenities

Amenities	Deck
Parking	Single Garage Attached

Interior

Interior Features	ensuite bathroom
Appliances	Dishwasher-Built-In, Dryer, Garage Control, Garage Opener, Microwave Hood Fan, Refrigerator, Stove-Electric, Vacuum System Attachments, Vacuum Systems, Washer
Heating	Forced Air-1, Natural Gas
Stories	2
Has Basement	Yes
Basement	Full, Unfinished

Exterior

Exterior	Wood, Stone, Vinyl
Exterior Features	Cul-De-Sac, Golf Nearby, Landscaped, Playground Nearby, Schools
Roof	Asphalt Shingles
Construction	Wood, Stone, Vinyl
Foundation	Concrete Perimeter

Additional Information

Date Listed	May 21st, 2025
Days on Market	22
Zoning	Zone 91

DATA IS DEEMED RELIABLE BUT IS NOT GUARANTEED ACCURATE BY THE REALTORS® ASSOCIATION OF EDMONTON. COPYRIGHT 2025 BY THE REALTORS® ASSOCIATION OF EDMONTON. ALL RIGHTS RESERVED.Trademarks are owned or controlled by the Canadian Real Estate Association (CREA) and identify real estate professionals who are members of CREA (REALTOR®, REALTORS®) and/or the quality of services they provide (MLS®, Multiple Listing Service®)

Listing information last updated on June 11th, 2025 at 9:32pm MDT