

\$290,000 - 212 400 Palisades Way, Sherwood Park

MLS® #E4437072

\$290,000

2 Bedroom, 2.00 Bathroom, 1,023 sqft
Condo / Townhouse on 0.00 Acres

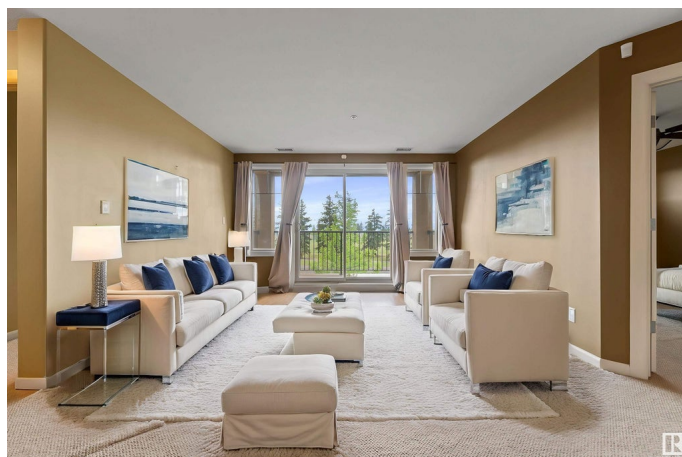
Centennial Village, Sherwood Park, AB

BEAUTIFULLY MAINTAINED 2 bedroom, 2 bathroom condo in a sought-after steel and concrete 18+ building. This spacious second-floor unit features an open concept layout with elegant granite countertops, warm maple cabinetry, a large pantry, and thoughtful finishes throughout. The primary bedroom includes a walk-in closet and a 3-piece ensuite for added comfort and privacy. Step outside to a covered patio equipped with a BBQ gas line, overlooking a quiet park—ideal for relaxing or entertaining. This unit comes with one titled UNDERGROUND HEATED parking stall. Residents enjoy access to premium amenities including guest suites, a private theatre room, steam/sauna facilities, an exercise room, games room, and an on-site car wash. The building is ideally situated close to walking and biking trails, public transit options, and a variety of shopping and dining destinations, offering a lifestyle of ease and convenience. WELCOME HOME!

Built in 2007

Essential Information

MLS® #	E4437072
Price	\$290,000
Bedrooms	2
Bathrooms	2.00



Full Baths	2
Square Footage	1,023
Acres	0.00
Year Built	2007
Type	Condo / Townhouse
Sub-Type	Lowrise Apartment
Style	Single Level Apartment
Status	Active

Community Information

Address	212 400 Palisades Way
Area	Sherwood Park
Subdivision	Centennial Village
City	Sherwood Park
County	ALBERTA
Province	AB
Postal Code	T8L 0H4

Amenities

Amenities	Air Conditioner, Car Wash, Exercise Room, Guest Suite, Sauna; Swirlpool; Steam, Secured Parking, Social Rooms, Storage Cage, Natural Gas BBQ Hookup
Parking	Parkade

Interior

Interior Features	ensuite bathroom
Appliances	None
Heating	Hot Water, Natural Gas
# of Stories	4
Stories	1
Has Basement	Yes
Basement	None, No Basement

Exterior

Exterior	Concrete, Stucco
Exterior Features	Backs Onto Park/Trees, Fenced, Landscaped, Public Transportation, Schools
Roof	Tar & Gravel
Construction	Concrete, Stucco

Foundation Concrete Perimeter

Additional Information

Date Listed May 16th, 2025
Days on Market 2
Zoning Zone 25
RE / Bank Owned Yes
Condo Fee \$690

DATA IS DEEMED RELIABLE BUT IS NOT GUARANTEED ACCURATE BY THE REALTORS® ASSOCIATION OF EDMONTON. COPYRIGHT 2025 BY THE REALTORS® ASSOCIATION OF EDMONTON. ALL RIGHTS RESERVED.Trademarks are owned or controlled by the Canadian Real Estate Association (CREA) and identify real estate professionals who are members of CREA (REALTOR®, REALTORS®) and/or the quality of services they provide (MLS®, Multiple Listing Service®)
Listing information last updated on May 18th, 2025 at 5:17pm MDT