

\$679,900 - 1216 Foxwood Crescent, Sherwood Park

MLS® #E4436290

\$679,900

4 Bedroom, 3.5 Bathroom, 2,339 sqft

Single Family on 0.00 Acres

Foxboro, Sherwood Park, AB

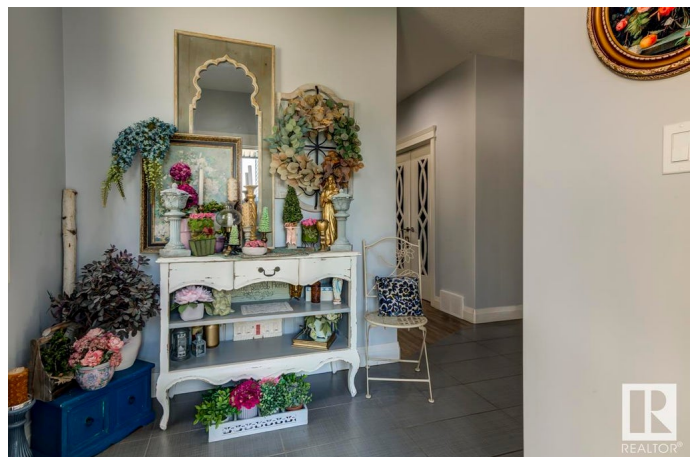
Personality Plus!! This gorgeous 2250 sq ft home has been beautifully upgraded and offers 4 bedrooms, 3.5 bathrooms and a fully finished basement! Recently renovated to showcase white cabinetry, vinyl plank flooring over all 3 levels, permanent Gemstone holiday lighting and Solar Panels! The kitchen features loads of cabinets, granite counters, large island, all new appliances (1 yr old) and a spacious walk-through pantry . Living and dining rooms overlook the backyard and a den and half bath complete the main level. Upstairs, the primary bedroom includes a walk-in closet and a 5 piece ensuite with jetted tub and water closet. Two large spare rooms, main bath, laundry room with counter & sink (washer/dryer 2 weeks old) and a bright bonus room complete this level. Basement development includes the 4th bedroom, big family room, 3 pc bath with rain shower, storage & mechanical room. Additionally, this home includes a heated garage, A/C, Hi-Eff furnace & security cameras. Parks, schools, shopping close by.

Built in 2013

Essential Information

MLS® # E4436290

Price \$679,900



Bedrooms	4
Bathrooms	3.50
Full Baths	3
Half Baths	1
Square Footage	2,339
Acres	0.00
Year Built	2013
Type	Single Family
Sub-Type	Detached Single Family
Style	2 Storey
Status	Active

Community Information

Address	1216 Foxwood Crescent
Area	Sherwood Park
Subdivision	Foxboro
City	Sherwood Park
County	ALBERTA
Province	AB
Postal Code	T8A 4T9

Amenities

Amenities	Air Conditioner, Deck, No Smoking Home
Parking Spaces	4
Parking	Double Garage Attached, Heated, Insulated

Interior

Interior Features	ensuite bathroom
Appliances	Air Conditioning-Central, Dishwasher-Built-In, Dryer, Garage Control, Garage Opener, Hood Fan, Oven-Microwave, Refrigerator, Storage Shed, Stove-Electric, Washer, Window Coverings
Heating	Forced Air-1, Natural Gas
Stories	3
Has Basement	Yes
Basement	Full, Finished

Exterior

Exterior	Wood, Vinyl
Exterior Features	Fenced, Landscaped, Playground Nearby, Schools, Shopping Nearby

Roof	Asphalt Shingles
Construction	Wood, Vinyl
Foundation	Concrete Perimeter

Additional Information

Date Listed	May 14th, 2025
Days on Market	8
Zoning	Zone 25

DATA IS DEEMED RELIABLE BUT IS NOT GUARANTEED ACCURATE BY THE REALTORS® ASSOCIATION OF EDMONTON. COPYRIGHT 2025 BY THE REALTORS® ASSOCIATION OF EDMONTON. ALL RIGHTS RESERVED.Trademarks are owned or controlled by the Canadian Real Estate Association (CREA) and identify real estate professionals who are members of CREA (REALTOR®, REALTORS®) and/or the quality of services they provide (MLS®, Multiple Listing Service®)

Listing information last updated on May 22nd, 2025 at 9:47am MDT