

\$597,000 - 182 Village Estate, Sherwood Park

MLS® #E4436283

\$597,000

3 Bedroom, 2.00 Bathroom, 1,621 sqft
Single Family on 0.00 Acres

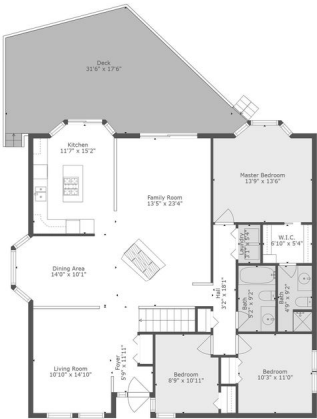
Village on the Lake, Sherwood Park, AB

This Salvi-built bungalow in the prestigious Village on the Lake community of Sherwood Park is a true gem! Offering over 3,000 sq ft of total living space, this home combines comfort, quality craftsmanship, and thoughtful design. The main level boasts three spacious bedrooms, including a primary suite with a private 3-piece ensuite. Convenience is key with main-floor laundry. The kitchen features a sleek countertop stove island, overlooking the inviting family room, making it perfect for entertaining. A charming two-sided brick wood fireplace enhances the ambiance in the cozy living room. Step outside to a large deck off the kitchen, ideal for summer gatherings. The insulated, unfinished basement offers endless possibilities for customization, and the insulated garage ensures year-round convenience. Move-in ready—your dream home awaits!

Built in 1983

Essential Information

MLS® #	E4436283
Price	\$597,000
Bedrooms	3
Bathrooms	2.00
Full Baths	2
Square Footage	1,621



TOTAL: 1500 sq. ft.
BELOW GROUND: 0 sq. ft. FLOOR 1: 1500 sq. ft.
EXCLUDED AREAS: BASEMENT: 1459 sq. ft. DECK: 407 sq. ft.
Floor Plan Created By: Collette-Adp. Measurements Derived From Publicly Available Data Not Guaranteed.



Acres	0.00
Year Built	1983
Type	Single Family
Sub-Type	Detached Single Family
Style	Bungalow
Status	Active

Community Information

Address	182 Village Estate
Area	Sherwood Park
Subdivision	Village on the Lake
City	Sherwood Park
County	ALBERTA
Province	AB
Postal Code	T8A 4P5

Amenities

Amenities	Deck, Detectors Smoke, No Animal Home, No Smoking Home, See Remarks
Parking	Double Garage Attached

Interior

Interior Features	ensuite bathroom
Appliances	Dishwasher-Built-In, Dryer, Garage Control, Garage Opener, Oven-Built-In, Refrigerator, Stove-Countertop Electric, Vacuum System Attachments, Washer, Window Coverings
Heating	Forced Air-1, Natural Gas
Fireplace	Yes
Fireplaces	Brick Facing, Double Sided
Stories	1
Has Basement	Yes
Basement	Full, Unfinished

Exterior

Exterior	Wood, Brick, Vinyl
Exterior Features	Cul-De-Sac, Fenced, Landscaped, Playground Nearby, Public Swimming Pool, Public Transportation, Schools, Shopping Nearby, See Remarks
Roof	Asphalt Shingles
Construction	Wood, Brick, Vinyl

Foundation Concrete Perimeter

Additional Information

Date Listed May 14th, 2025

Days on Market 8

Zoning Zone 25

DATA IS DEEMED RELIABLE BUT IS NOT GUARANTEED ACCURATE BY THE REALTORS® ASSOCIATION OF EDMONTON. COPYRIGHT 2025 BY THE REALTORS® ASSOCIATION OF EDMONTON. ALL RIGHTS RESERVED.Trademarks are owned or controlled by the Canadian Real Estate Association (CREA) and identify real estate professionals who are members of CREA (REALTOR®, REALTORS®) and/or the quality of services they provide (MLS®, Multiple Listing Service®)

Listing information last updated on May 22nd, 2025 at 1:02am MDT