

\$669,000 - 205 Kettyl Court, Leduc

MLS® #E4436235

\$669,000

4 Bedroom, 3.00 Bathroom, 2,288 sqft

Single Family on 0.00 Acres

West Haven Park, Leduc, AB

Welcome to West Haven! This brand-new home boasts high-quality luxury finishes throughout. The main floor features an open-concept design with a spacious living room, soaring open-to-above ceilings, and a striking feature wall with a gorgeous fireplace. The chef's kitchen is a dream, complete with premium finishes and a walk-through spice kitchen that includes a fully customized pantry. A full bathroom on the main floor provides flexibility, allowing the additional room to be used as a den, bedroom, playroom, or office. Upstairs, you'll find 9' ceilings and a stunning master suite with a vaulted ceiling, a lavish 5-piece ensuite, and a massive walk-in closet. Three additional generously sized bedrooms, a versatile bonus room, and a beautifully designed laundry room with a sink, countertops, and cabinetry complete the upper level. This home also features a separate side entrance to the basement, 9' ceilings on all three levels, elegant quartz countertops, and countless high-end details. Don't miss out



Built in 2025

Essential Information

MLS® # E4436235

Price \$669,000

Bedrooms	4
Bathrooms	3.00
Full Baths	3
Square Footage	2,288
Acres	0.00
Year Built	2025
Type	Single Family
Sub-Type	Detached Single Family
Style	2 Storey
Status	Active

Community Information

Address	205 Kettyl Court
Area	Leduc
Subdivision	West Haven Park
City	Leduc
County	ALBERTA
Province	AB
Postal Code	T9E 1S1

Amenities

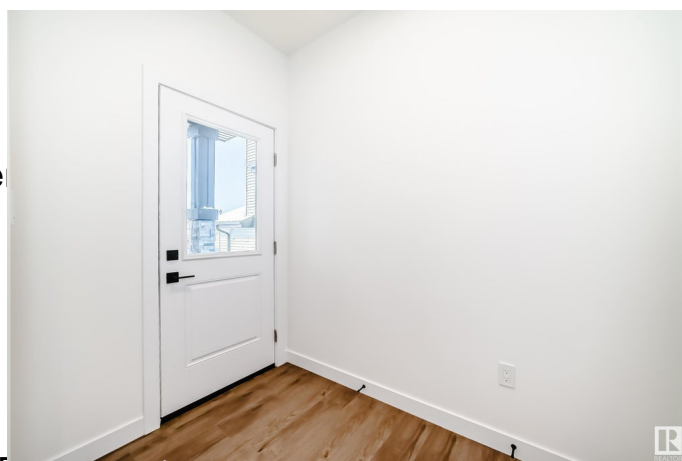
Amenities	Ceiling 9 ft., Deck, Hot Water Ceiling
Parking	Double Garage Attached

Interior

Interior Features	ensuite bathroom
Appliances	Dishwasher-Built-In, Hood Fan, Microwave Hood Fan, Oven-Built-In, Oven-Microwave, Refrigerator, Stove-Countertop Gas, Stove-Electric
Heating	Forced Air-1, Natural Gas
Stories	2
Has Basement	Yes
Basement	Full, Unfinished

Exterior

Exterior	Wood, Vinyl
Exterior Features	Airport Nearby, Golf Nearby, Park/Reserve, Schools, Shopping Nearby
Roof	Asphalt Shingles
Construction	Wood, Vinyl



Foundation Concrete Perimeter

Additional Information

Date Listed May 13th, 2025
Days on Market 9
Zoning Zone 81

DATA IS DEEMED RELIABLE BUT IS NOT GUARANTEED ACCURATE BY THE REALTORS® ASSOCIATION OF EDMONTON. COPYRIGHT 2025 BY THE REALTORS® ASSOCIATION OF EDMONTON. ALL RIGHTS RESERVED.Trademarks are owned or controlled by the Canadian Real Estate Association (CREA) and identify real estate professionals who are members of CREA (REALTOR®, REALTORS®) and/or the quality of services they provide (MLS®, Multiple Listing Service®)
Listing information last updated on May 22nd, 2025 at 8:17am MDT