

\$359,900 - 23 Miller Avenue, Spruce Grove

MLS® #E4436173

\$359,900

3 Bedroom, 2.50 Bathroom, 1,044 sqft
Single Family on 0.00 Acres

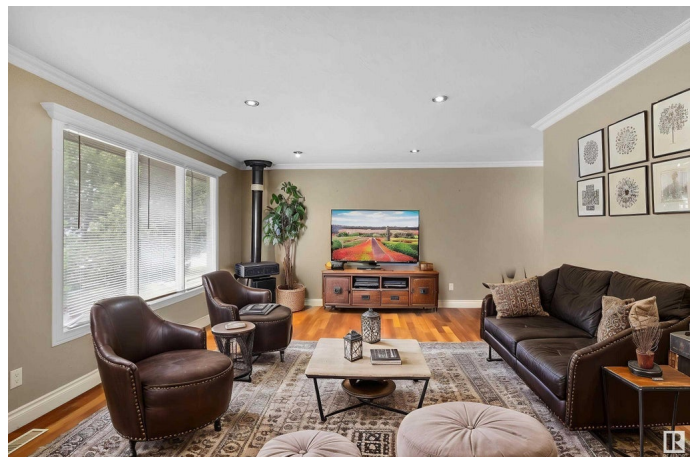
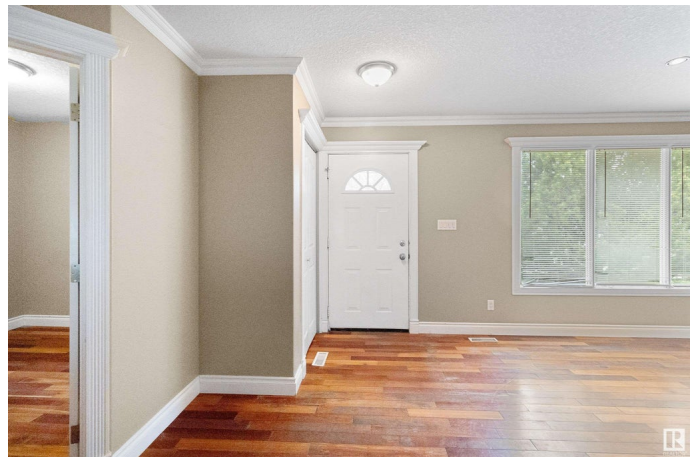
Millgrove, Spruce Grove, AB

Discover this gem of a home tucked away on a quiet street in central Spruce Grove, offering charm, space, and thoughtful upgrades. The inviting exterior sets the tone, complemented by rich hardwood and laminate floors, recent paint, carpets, and updated trim throughout. A beautifully renovated kitchen with stylish cabinetry and stainless appliances is the heart of the home, while the spacious living room, complete with a cozy wood stove, creates a warm, welcoming atmosphere. The main floor features two bedrooms plus a den, with the large primary bedroom boasting a private two-piece ensuite. Downstairs, the fully finished basement expands your living space with two additional bedrooms, a family room with a fireplace, and a full bathroom—perfect for guests or a growing family. Step outside to enjoy a good-sized yard, ideal for relaxation or entertaining. A double garage adds convenience, rounding out this well-loved home in a fantastic location close to parks, schools, and amenities.

Built in 1978

Essential Information

MLS® #	E4436173
Price	\$359,900
Bedrooms	3



Bathrooms	2.50
Full Baths	2
Half Baths	1
Square Footage	1,044
Acres	0.00
Year Built	1978
Type	Single Family
Sub-Type	Detached Single Family
Style	Bungalow
Status	Active

Community Information

Address	23 Miller Avenue
Area	Spruce Grove
Subdivision	Millgrove
City	Spruce Grove
County	ALBERTA
Province	AB
Postal Code	T7X 2N3

Amenities

Amenities	See Remarks
Parking Spaces	4
Parking	Double Garage Detached

Interior

Interior Features	ensuite bathroom
Appliances	Dishwasher-Built-In, Dryer, Refrigerator, Stove-Countertop Electric, Stove-Electric, Washer
Heating	Forced Air-1, Natural Gas
Fireplace	Yes
Fireplaces	Woodstove
Stories	2
Has Basement	Yes
Basement	Full, Finished

Exterior

Exterior	Wood, Vinyl
Exterior Features	Landscaped, Shopping Nearby

Roof	Asphalt Shingles
Construction	Wood, Vinyl
Foundation	Concrete Perimeter

Additional Information

Date Listed	May 10th, 2025
Days on Market	13
Zoning	Zone 91

DATA IS DEEMED RELIABLE BUT IS NOT GUARANTEED ACCURATE BY THE REALTORS® ASSOCIATION OF EDMONTON. COPYRIGHT 2025 BY THE REALTORS® ASSOCIATION OF EDMONTON. ALL RIGHTS RESERVED.Trademarks are owned or controlled by the Canadian Real Estate Association (CREA) and identify real estate professionals who are members of CREA (REALTOR®, REALTORS®) and/or the quality of services they provide (MLS®, Multiple Listing Service®)

Listing information last updated on May 23rd, 2025 at 1:32pm MDT