

\$424,900 - 57 5 Rondeau Drive, St. Albert

MLS® #E4435915

\$424,900

2 Bedroom, 2.50 Bathroom, 1,404 sqft

Condo / Townhouse on 0.00 Acres

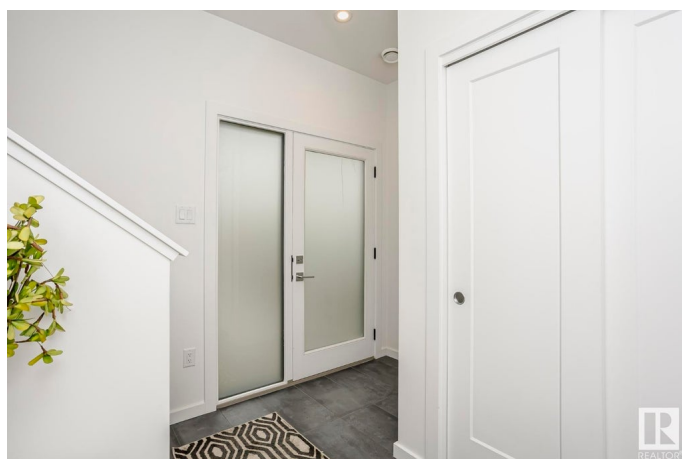
South Riel, St. Albert, AB

Check out the best price for a 3 storey unit with double attached garage in Midtown, located in the vibrant and rapidly growing community of South Riel. Close to great amenities. Just across from the Enjoy Centre, Riel Business Park and Recreation Park and Lois Hole provincial park. Ray Gibbons Drive provides quick access to North St Albert and Edmonton. There is also a private Playground and Park area within the complex. This modern home shows extremely well with a bright open main floor plan. 9 ft ceilings and lots of natural light. The two large bedrooms each have their own ensuite and walk in closets. This home has the perfect design for entertaining with an island kitchen open to both living and dining area. High end appliances and quartz countertops. Central Air Conditioning and high quality motorized blinds with rechargeable wands are just some of the amazing upgrades. Low condo fees of \$134.95 make this even more attractive.

Built in 2022

Essential Information

MLS® #	E4435915
Price	\$424,900
Bedrooms	2
Bathrooms	2.50



Full Baths	2
Half Baths	1
Square Footage	1,404
Acres	0.00
Year Built	2022
Type	Condo / Townhouse
Sub-Type	Townhouse
Style	3 Storey
Status	Active

Community Information

Address	57 5 Rondeau Drive
Area	St. Albert
Subdivision	South Riel
City	St. Albert
County	ALBERTA
Province	AB
Postal Code	T8N 7X8

Amenities

Amenities	Air Conditioner, Ceiling 9 ft., Closet Organizers, Hot Water Electric, No Animal Home, No Smoking Home, Parking-Visitor, Vinyl Windows
Parking Spaces	2
Parking	Double Garage Attached

Interior

Interior Features	ensuite bathroom
Appliances	Air Conditioning-Central, Dishwasher-Built-In, Dryer, Garage Control, Garage Opener, Hood Fan, Oven-Microwave, Refrigerator, Stove-Electric, Washer, Window Coverings
Heating	Forced Air-1, Natural Gas
Stories	3
Has Basement	Yes
Basement	None, No Basement

Exterior

Exterior	Wood, Brick, Hardie Board Siding
Exterior Features	Golf Nearby, Low Maintenance Landscape, Park/Reserve, Playground Nearby, Public Transportation

Roof	Flat
Construction	Wood, Brick, Hardie Board Siding
Foundation	Concrete Perimeter

Additional Information

Date Listed	May 11th, 2025
Days on Market	13
Zoning	Zone 24
Condo Fee	\$135

DATA IS DEEMED RELIABLE BUT IS NOT GUARANTEED ACCURATE BY THE REALTORS® ASSOCIATION OF EDMONTON. COPYRIGHT 2025 BY THE REALTORS® ASSOCIATION OF EDMONTON. ALL RIGHTS RESERVED. Trademarks are owned or controlled by the Canadian Real Estate Association (CREA) and identify real estate professionals who are members of CREA (REALTOR®, REALTORS®) and/or the quality of services they provide (MLS®, Multiple Listing Service®)

Listing information last updated on May 24th, 2025 at 12:17am MDT