

## \$464,900 - 621 Village Drive, Sherwood Park

MLS® #E4435274

**\$464,900**

5 Bedroom, 2.50 Bathroom, 1,359 sqft

Single Family on 0.00 Acres

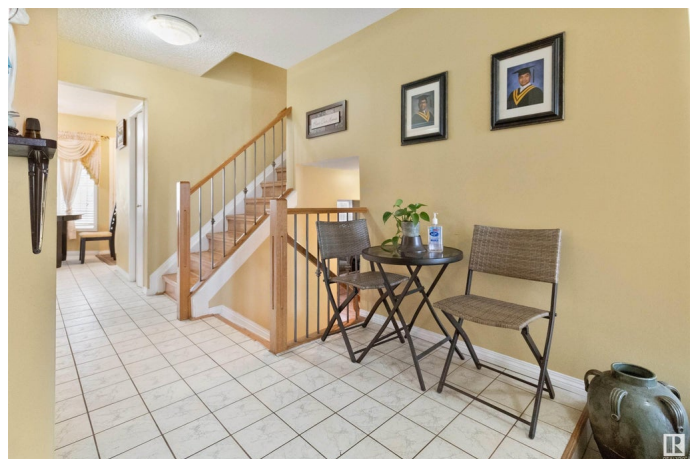
Village on the Lake, Sherwood Park, AB

Located in desirable Village on the Lake, this 1450+ sq ft 4 level split is just waiting for new owners to put their personal mark on. The main floor is spacious and consists of a large living room, dining room and kitchen which leads to backyard. The upper level has a huge master suite with a 4 pce ensuite, and a walk in closet. Two more large bedrooms and a 4 pce bath complete the upper floor. The lower level has a large family room, a 4th bedroom and 2 pce bathroom. The basement is finished with a wet bar, and a laundry area. Furnace was replaced approximately 10 years ago.

Built in 1981

### Essential Information

MLS® #	E4435274
Price	\$464,900
Bedrooms	5
Bathrooms	2.50
Full Baths	2
Half Baths	1
Square Footage	1,359
Acres	0.00
Year Built	1981
Type	Single Family
Sub-Type	Detached Single Family
Style	4 Level Split



Status Active

## Community Information

Address 621 Village Drive  
Area Sherwood Park  
Subdivision Village on the Lake  
City Sherwood Park  
County ALBERTA  
Province AB  
Postal Code T8A 4K7

## Amenities

Amenities See Remarks  
Parking Double Garage Attached

## Interior

Interior Features ensuite bathroom  
Appliances Dishwasher-Built-In, Dryer, Refrigerator, Stove-Electric, Vacuum Systems, Washer  
Heating Forced Air-2, Natural Gas  
Stories 4  
Has Basement Yes  
Basement Full, Finished

## Exterior

Exterior Wood, Brick, Vinyl  
Exterior Features Fenced, Landscaped, Public Transportation, Schools, See Remarks  
Roof Asphalt Shingles  
Construction Wood, Brick, Vinyl  
Foundation Concrete Perimeter

## Additional Information

Date Listed May 8th, 2025  
Days on Market 19  
Zoning Zone 25

DATA IS DEEMED RELIABLE BUT IS NOT GUARANTEED ACCURATE BY THE REALTORS® ASSOCIATION OF EDMONTON. COPYRIGHT 2025 BY THE REALTORS® ASSOCIATION OF EDMONTON. ALL RIGHTS RESERVED.Trademarks are owned or controlled by the Canadian Real Estate Association (CREA) and identify real estate professionals who are members of CREA (REALTOR®, REALTORS®) and/or the quality of services they provide (MLS®, Multiple Listing Service®)  
Listing information last updated on May 27th, 2025 at 4:32pm MDT