

Courtesy Of Thomas B Scott Of RE/MAX River City

## \$499,900 - 8607 10 Avenue, Edmonton

MLS® #E4434004

**\$499,900**

4 Bedroom, 3.00 Bathroom, 1,259 sqft

Single Family on 0.00 Acres

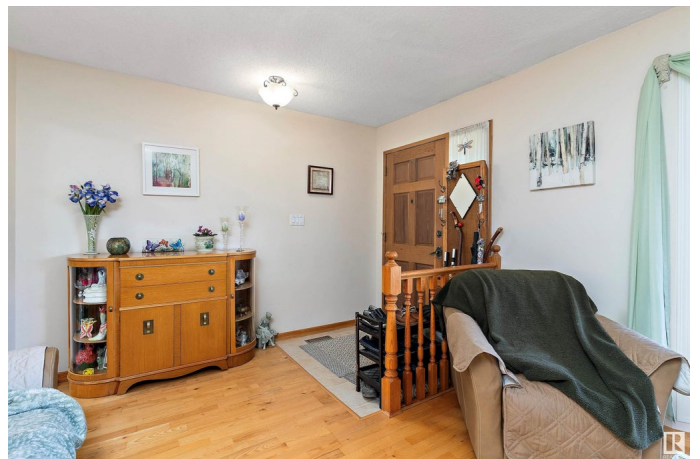
Satoo, Edmonton, AB

Beautifully maintained bungalow with a backyard oasis in quiet, family-friendly Satoo! Backing onto a greenbelt and off-leash park, this home offers over 2,360 sq. ft. of finished space with 4 bedrooms, 3 full baths, and countless upgrades. The bright main floor features a spacious living room with gas fireplace, formal dining area, and a stunning renovated kitchen with breakfast nook and access to a large composite deck. Enjoy the HUGE south-facing yard with mature trees, fire pit, and no rear neighbours! The primary suite includes a walk-in closet and 4-pc ensuite, with two more generous bedrooms and a full bath completing the main level. The fully finished basement is perfect for entertaining, with a large rec room, built-in bar, second fireplace, fourth bedroom, full bath, and cold room. Updates include windows, shingles, HWT, hardwood and vinyl flooring. Move-in ready and truly a must-see!

Built in 1975

### Essential Information

MLS® #	E4434004
Price	\$499,900
Bedrooms	4
Bathrooms	3.00
Full Baths	3



Square Footage	1,259
Acres	0.00
Year Built	1975
Type	Single Family
Sub-Type	Detached Single Family
Style	Bungalow
Status	Active

### Community Information

Address	8607 10 Avenue
Area	Edmonton
Subdivision	Satoo
City	Edmonton
County	ALBERTA
Province	AB
Postal Code	T6K 1W9

### Amenities

Amenities	Bar, Closet Organizers, Deck, Fire Pit, Hot Water Natural Gas, Vinyl Windows, See Remarks
Parking Spaces	4
Parking	Double Garage Attached

### Interior

Interior Features	ensuite bathroom
Appliances	Alarm/Security System, Dishwasher-Built-In, Dryer, Garage Control, Garage Opener, Microwave Hood Fan, Refrigerator, Storage Shed, Stove-Electric, Washer, Window Coverings
Heating	Forced Air-1, Natural Gas
Fireplace	Yes
Fireplaces	Stone Facing
Stories	2
Has Basement	Yes
Basement	Full, Finished

### Exterior

Exterior	Wood, Brick, Stucco
Exterior Features	Airport Nearby, Backs Onto Park/Trees, Fenced, Golf Nearby, Landscaped, Playground Nearby, Private Setting, Public Swimming Pool, Public Transportation, Schools, Shopping Nearby, See Remarks

Roof	Asphalt Shingles
Construction	Wood, Brick, Stucco
Foundation	Concrete Perimeter

**Additional Information**

Date Listed	May 2nd, 2025
Days on Market	6
Zoning	Zone 29

DATA IS DEEMED RELIABLE BUT IS NOT GUARANTEED ACCURATE BY THE REALTORS® ASSOCIATION OF EDMONTON. COPYRIGHT 2025 BY THE REALTORS® ASSOCIATION OF EDMONTON. ALL RIGHTS RESERVED.Trademarks are owned or controlled by the Canadian Real Estate Association (CREA) and identify real estate professionals who are members of CREA (REALTOR®, REALTORS®) and/or the quality of services they provide (MLS®, Multiple Listing Service®)

Listing information last updated on May 8th, 2025 at 12:47am MDT