

\$229,900 - 307 10116 80 Avenue, Edmonton

MLS® #E4433473

\$229,900

2 Bedroom, 2.00 Bathroom, 1,020 sqft

Condo / Townhouse on 0.00 Acres

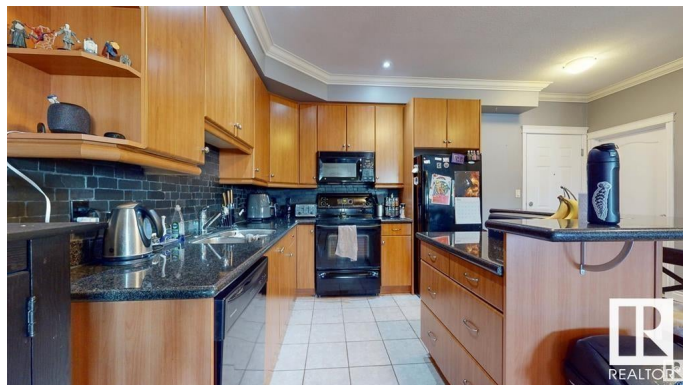
Ritchie, Edmonton, AB

Executive 2 bed / 2 bath condo steps to Whyte Avenue! Less than 10 minute drive to both UofA and downtown. Bright and spacious unit. Fully painted less than a year ago. Gorgeous granite counters. Plenty of cabinets. Black appliances. Functional floorplan with separated bedrooms. Titled underground parking with storage. In-suite laundry with large storage room. Oversized balcony perfect for BBQs. Pet friendly building with board approval. Excellent location close to many restaurants, shopping and public transportation.

Built in 2002

Essential Information

MLS® #	E4433473
Price	\$229,900
Bedrooms	2
Bathrooms	2.00
Full Baths	2
Square Footage	1,020
Acres	0.00
Year Built	2002
Type	Condo / Townhouse
Sub-Type	Lowrise Apartment
Style	Single Level Apartment
Status	Active



Community Information

Address	307 10116 80 Avenue
Area	Edmonton
Subdivision	Ritchie
City	Edmonton
County	ALBERTA
Province	AB
Postal Code	T6E 6V7

Amenities

Amenities	Exercise Room, Parking-Visitor, Storage-In-Suite, Storage Cage
Parking Spaces	1
Parking	Underground

Interior

Interior Features	ensuite bathroom
Appliances	Dishwasher-Built-In, Dryer, Refrigerator, Stove-Electric, Washer, Window Coverings
Heating	In Floor Heat System, Natural Gas
# of Stories	4
Stories	1
Has Basement	Yes
Basement	None, No Basement

Exterior

Exterior	Wood, Stucco
Exterior Features	Public Transportation, Schools, Shopping Nearby
Roof	Tar & Gravel
Construction	Wood, Stucco
Foundation	Concrete Perimeter

Additional Information

Date Listed	April 30th, 2025
Days on Market	89
Zoning	Zone 17
Condo Fee	\$623

DATA IS DEEMED RELIABLE BUT IS NOT GUARANTEED ACCURATE BY THE REALTORS® ASSOCIATION OF EDMONTON. COPYRIGHT 2025 BY THE REALTORS® ASSOCIATION OF EDMONTON. ALL RIGHTS RESERVED. Trademarks are owned or controlled by the Canadian Real Estate Association (CREA) and identify real estate professionals who are members of CREA (REALTOR®, REALTORS®) and/or the quality of services they

provide (MLS®®, Multiple Listing Service®®)
Listing information last updated on July 28th, 2025 at 1:32pm MDT