

\$209,000 - 149 16311 95 Street, Edmonton

MLS® #E4432944

\$209,000

2 Bedroom, 2.00 Bathroom, 913 sqft

Condo / Townhouse on 0.00 Acres

Eaux Claires, Edmonton, AB

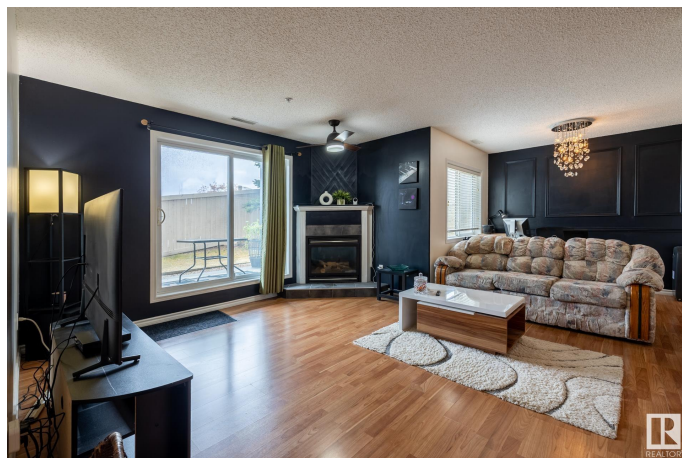
Discover stylish urban living in this elegant 2-bedroom, 2-bathroom corner unit located in the heart of Edmonton's desirable Eaux Claires community. Offering 913 sq ft of thoughtfully designed space, this single-level apartment promises both comfort and convenience. Experience the perfect blend of carpet, laminate, and ceramic floors that seamlessly flow throughout the open-concept layout. The large kitchen caters to culinary enthusiasts with an inviting island, ample cupboards with under cabinet dimmable lights. Floor-to-ceiling windows with a north-east exposure flood the space with natural light, enhancing the private setting. The primary bedroom is a sanctuary with its expansive walkthrough closet leading to a luxurious 4-piece ensuite bath. Your vehicle remains protected year-round with TWO TITLED parking - underground and surface. Additional features include spacious bathrooms and superb access to shopping, dining, transportation, and medical facilities, making this location highly sought after.

Built in 2004

Essential Information

MLS® # E4432944

Price \$209,000



Bedrooms	2
Bathrooms	2.00
Full Baths	2
Square Footage	913
Acres	0.00
Year Built	2004
Type	Condo / Townhouse
Sub-Type	Lowrise Apartment
Style	Single Level Apartment
Status	Active

Community Information

Address	149 16311 95 Street
Area	Edmonton
Subdivision	Eaux Claires
City	Edmonton
County	ALBERTA
Province	AB
Postal Code	T5Z 3Y5

Amenities

Amenities	Detectors Smoke
Parking	Heated, Parkade, Underground

Interior

Interior Features	ensuite bathroom
Appliances	Dishwasher-Built-In, Dryer, Garage Control, Hood Fan, Refrigerator, Stove-Electric, Washer
Heating	Forced Air-1, Natural Gas
Fireplace	Yes
Fireplaces	Mantel
# of Stories	4
Stories	4
Has Basement	Yes
Basement	None, No Basement

Exterior

Exterior	Wood, Vinyl
Exterior Features	Backs Onto Park/Trees, Private Setting, Public Transportation, Schools,

	Shopping Nearby
Roof	Asphalt Shingles
Construction	Wood, Vinyl
Foundation	Concrete Perimeter

Additional Information

Date Listed	April 25th, 2025
Days on Market	15
Zoning	Zone 28
Condo Fee	\$490

DATA IS DEEMED RELIABLE BUT IS NOT GUARANTEED ACCURATE BY THE REALTORS® ASSOCIATION OF EDMONTON. COPYRIGHT 2025 BY THE REALTORS® ASSOCIATION OF EDMONTON. ALL RIGHTS RESERVED. Trademarks are owned or controlled by the Canadian Real Estate Association (CREA) and identify real estate professionals who are members of CREA (REALTOR®, REALTORS®) and/or the quality of services they provide (MLS®, Multiple Listing Service®)

Listing information last updated on May 9th, 2025 at 10:17pm MDT