

\$133,900 - 103 49 Akins Drive, St. Albert

MLS® #E4432750

\$133,900

2 Bedroom, 1.00 Bathroom, 892 sqft

Condo / Townhouse on 0.00 Acres

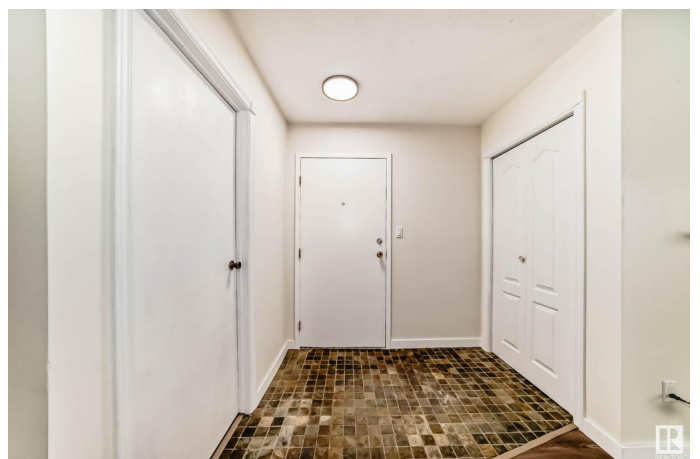
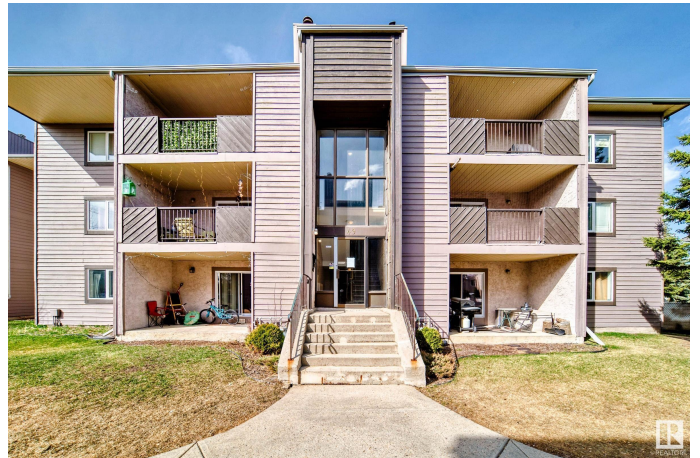
Akinsdale, St. Albert, AB

Ground-floor condo in the desirable community of Akinsdale! Tucked at the rear of the building, it offers added privacy and green space viewsâ€”perfect for enjoying the covered north-facing patio. Inside, youâ€™ll find new laminate flooring and fresh paint in the main living areas. The living room features a classic wood-burning fireplace and sliding patio doors that bring in natural light. There are two bedrooms, with the primary offering a spacious walk-in closet and direct access to the bathroom, making it feel like an ensuite. Storage off the patio, a portable electric fireplace, energized outdoor parking stall and shared app-operated laundry on the second floor. Close to a Kâ€™9 school, bus stop, shops, parks and the Cogito Program at Elmer Gish. Easy Henday access and minutes to groceriesâ€”ideal for first-time buyers, downsizers, or anyone seeking low-maintenance living.

Built in 1980

Essential Information

MLS® #	E4432750
Price	\$133,900
Bedrooms	2
Bathrooms	1.00
Full Baths	1



Square Footage	892
Acres	0.00
Year Built	1980
Type	Condo / Townhouse
Sub-Type	Lowrise Apartment
Style	Single Level Apartment
Status	Active

Community Information

Address	103 49 Akins Drive
Area	St. Albert
Subdivision	Akinsdale
City	St. Albert
County	ALBERTA
Province	AB
Postal Code	T8M 3M6

Amenities

Amenities	Parking-Visitor, Patio
Parking	See Remarks

Interior

Interior Features	ensuite bathroom
Appliances	Dishwasher-Built-In, Hood Fan, Refrigerator, Stove-Electric, Window Coverings, See Remarks
Heating	Forced Air-1, Natural Gas
Fireplace	Yes
Fireplaces	See Remarks
# of Stories	3
Stories	1
Has Basement	Yes
Basement	None, No Basement

Exterior

Exterior	Wood
Exterior Features	Playground Nearby, Public Transportation, Shopping Nearby
Roof	Asphalt Shingles
Construction	Wood
Foundation	Concrete Perimeter

Additional Information

Date Listed	April 25th, 2025
Days on Market	36
Zoning	Zone 24
Condo Fee	\$459

DATA IS DEEMED RELIABLE BUT IS NOT GUARANTEED ACCURATE BY THE REALTORS® ASSOCIATION OF EDMONTON. COPYRIGHT 2025 BY THE REALTORS® ASSOCIATION OF EDMONTON. ALL RIGHTS RESERVED.Trademarks are owned or controlled by the Canadian Real Estate Association (CREA) and identify real estate professionals who are members of CREA (REALTOR®, REALTORS®) and/or the quality of services they provide (MLS®, Multiple Listing Service®)

Listing information last updated on May 31st, 2025 at 7:02pm MDT