

\$472,000 - 81 Avonlea Way, Spruce Grove

MLS® #E4431072

\$472,000

3 Bedroom, 3.00 Bathroom, 1,613 sqft

Single Family on 0.00 Acres

Aspen Glen, Spruce Grove, AB

If you are looking for a TURNKEY home, to just move in and enjoy & not worry about anything for awhile, this is it! Located in a beautiful neighborhood of Aspen Glen, next to walking trails, golf course and close to major commutes, this home is perfect for raising a family! The main floor features a spacious floor plan with bright living room, kitchen (& corner pantry), dining room with sliding doors to the south facing back yard, two pc bath & laundry/mudroom entrance to the double attached garage. Upstairs you will find a cozy bonus room with vaulted ceilings, two spacious bedrooms with 4 pc main bath & generous primary suite with walk through 4 pc ensuite & walk in closet! Basement is fully finished & is perfect for entertaining! Large family room with 2 pc bath (roughed in shower) & storage/utility room. Recent updates include new laminate flooring & paint on main floor, new furnace & A/C! South facing back yard features a massive deck, storage shed & plenty of space for kids & pets!

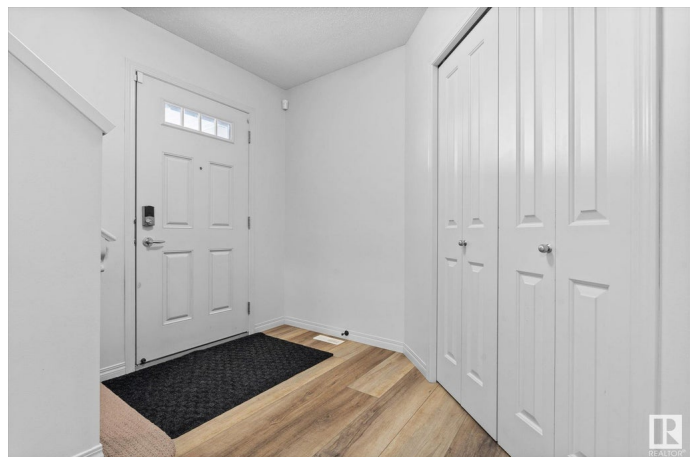
Built in 2008

Essential Information

MLS® # E4431072

Price \$472,000

Bedrooms 3



Bathrooms	3.00
Full Baths	2
Half Baths	2
Square Footage	1,613
Acres	0.00
Year Built	2008
Type	Single Family
Sub-Type	Detached Single Family
Style	2 Storey
Status	Active

Community Information

Address	81 Avonlea Way
Area	Spruce Grove
Subdivision	Aspen Glen
City	Spruce Grove
County	ALBERTA
Province	AB
Postal Code	T7X 4R5

Amenities

Amenities	Air Conditioner, Deck, No Smoking Home
Parking	Double Garage Attached

Interior

Interior Features	ensuite bathroom
Appliances	Air Conditioning-Central, Dishwasher-Built-In, Dryer, Garage Control, Garage Opener, Hood Fan, Refrigerator, Storage Shed, Stove-Electric, Washer, Window Coverings
Heating	Forced Air-1, Natural Gas
Fireplace	Yes
Fireplaces	Corner
Stories	3
Has Basement	Yes
Basement	Full, Finished

Exterior

Exterior	Wood, Stone, Vinyl
Exterior Features	Fenced, Landscaped, No Back Lane, Playground Nearby, Public

Transportation, Schools, Shopping Nearby

Roof	Asphalt Shingles
Construction	Wood, Stone, Vinyl
Foundation	Concrete Perimeter

School Information

Elementary	Millgrove
Middle	Brookwood
High	Spruce Grove Comp

Additional Information

Date Listed	April 15th, 2025
Days on Market	6
Zoning	Zone 91

DATA IS DEEMED RELIABLE BUT IS NOT GUARANTEED ACCURATE BY THE REALTORS® ASSOCIATION OF EDMONTON. COPYRIGHT 2025 BY THE REALTORS® ASSOCIATION OF EDMONTON. ALL RIGHTS RESERVED. Trademarks are owned or controlled by the Canadian Real Estate Association (CREA) and identify real estate professionals who are members of CREA (REALTOR®, REALTORS®) and/or the quality of services they provide (MLS®, Multiple Listing Service®)

Listing information last updated on April 21st, 2025 at 1:02pm MDT