

## \$465,000 - 12 Ivy Crescent, Sherwood Park

MLS® #E4430712

**\$465,000**

5 Bedroom, 2.50 Bathroom, 1,136 sqft

Single Family on 0.00 Acres

Maplewood (Sherwood Park), Sherwood Park,  
AB

WELL CARED FOR HOME,WITH HUGE  
BACKYARD,LIVING ROOM/KITCHEN NEW  
PAINT /FLOORING LAST YEAR,GREAT  
LOCATION.

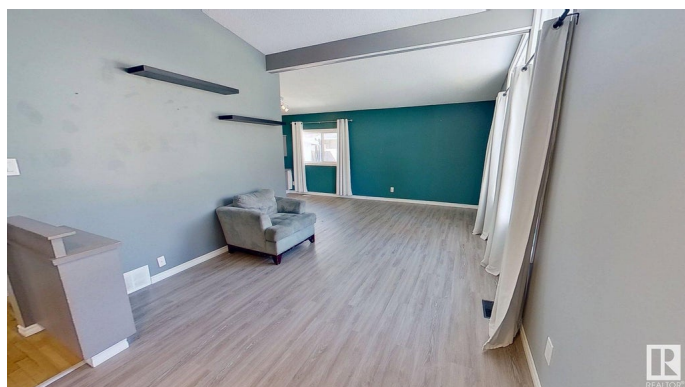
Built in 1970

### Essential Information

MLS® #	E4430712
Price	\$465,000
Bedrooms	5
Bathrooms	2.50
Full Baths	2
Half Baths	1
Square Footage	1,136
Acres	0.00
Year Built	1970
Type	Single Family
Sub-Type	Detached Single Family
Style	Bungalow
Status	Active

### Community Information

Address	12 Ivy Crescent
Area	Sherwood Park
Subdivision	Maplewood (Sherwood Park)
City	Sherwood Park



County	ALBERTA
Province	AB
Postal Code	T8A 1W4

### Amenities

Amenities	Detectors Smoke, Fire Pit, Gazebo, Greenhouse, Hot Water Electric, Insulation-Upgraded, Low Flw/Dual Flush Toilet, No Smoking Home, Parking-Extra, Parking-Plug-Ins, R.V. Storage
Parking Spaces	4
Parking	Double Garage Detached

### Interior

Interior Features	ensuite bathroom
Appliances	None
Heating	Forced Air-1, Natural Gas
Stories	2
Has Basement	Yes
Basement	Full, Finished

### Exterior

Exterior	Wood, Stucco
Exterior Features	Airport Nearby, Fenced, Fruit Trees/Shrubs, Landscaped, Paved Lane, Playground Nearby, Public Transportation, Schools, Shopping Nearby, Vegetable Garden
Roof	Asphalt Shingles
Construction	Wood, Stucco
Foundation	Concrete Perimeter

### Additional Information

Date Listed	April 14th, 2025
Days on Market	151
Zoning	Zone 25

DATA IS DEEMED RELIABLE BUT IS NOT GUARANTEED ACCURATE BY THE REALTORS® ASSOCIATION OF EDMONTON. COPYRIGHT 2025 BY THE REALTORS® ASSOCIATION OF EDMONTON. ALL RIGHTS RESERVED. Trademarks are owned or controlled by the Canadian Real Estate Association (CREA) and identify real estate professionals who are members of CREA (REALTOR®, REALTORS®) and/or the quality of services they provide (MLS®, Multiple Listing Service®)

Listing information last updated on September 12th, 2025 at 4:02am MDT